

WESTERN REGIONAL AIR PARTNERSHIP

EMISSIONS DATA MANAGEMENT SYSTEM

Action Plan

DRAFT

PECHAN

5528-B Hempstead Way
Springfield, VA 22151

703-813-6700 telephone
703-813-6729 facsimile

3622 Lyckan Parkway
Suite 2002
Durham, NC 27707

919-493-3144 telephone
919-493-3182 facsimile

P.O. Box 1345
El Dorado, CA 95623

530-295-2995 telephone
530-295-2999 facsimile

Prepared for:
Western Regional Air Partnership
Emissions Data Management System
Steering Committee

-and-

Western Governor's Association
1515 Cleveland Place
Suite 200
Denver, Colorado 80202

Prepared by:

E.H. Pechan & Associates, Inc.
3622 Lyckan Parkway, Suite 2002
Durham, NC 27707

May 25, 2006

Contract No. #30204-78

[This page intentionally left blank.]

Table of Contents

I. Introduction	1
II. Post-Beta Issue Resolution.....	1
Table II – 1: Issues and Action	2
Table II – 2: The 30-60-90 Plan.....	10
III. EDMS System Design As Delivered Document	11
IV. Forward Planning Methodology	11
Appendix A.....	12

I. Introduction

This document presents Pechan's approach to resolving issues identified in the recent post-beta testing conducted on the Emissions Data Management System (EDMS). The document is divided into the following sections:

- **Post Beta Issue Resolution** – including 30-60-90 day plan;
- **EDMS System Design As Delivered Document** – a discussion describing the document to be delivered as a separate volume; and
- **Forward Planning Methodology** – detailing future activities including potential enhancements and a timeline of activities.

Appendix A provides supporting documentation and detail for the information summarized in these sections.

II. Post-Beta Issue Resolution

Post Beta Issue Resolution is organized into two parts. The first discusses the issues raised in the WRAP EDMS Post-Beta Test Approach, Findings, and Recommendations, hereafter referred to as the Post-Beta Test Report (PBTR). This information is presented in Table II-1, using the organizational approach used in the 07 February 2006 presentation to the Emission Forum. The second section describes Pechan's plans to address identified issues in 30, 60, or 90 days. This information is presented in Table II-2.

Table II – 1: Issues and Action

Issue Description	Proposed Resolution	Further Action Planned and Timetable	Need for Follow-up Discussion	Appendix Issue ID
Tribal data requires revisions	The Institute of Tribal Environmental Professionals (ITEP) has prepared replacement data for some of the existing data in the EDMS.	This data has been provided to Pechan and is being incorporated in the upcoming inventory release (Inventory #9 – 2002 Actual version 1.3). Details of the data modifications are available in spreadsheet form from the EDMS Project Website (http://projects.pechan.com/edms/EDMS_Tribes_Action_040606.xls).	None	NA
Standard Report #7 (Top 10 by SCC) - on occasion, there are more than 10 SCCs displayed on the graph.	The EDMS will show more than 10 results if there are SCCs with equal emissions values.	Pechan will add additional detail to the caption, explaining cases in which greater or less than 10 results are returned. Pechan will also filter out zero-emissions results. This modification will be completed within 30 days. Pechan will provide example solutions to the Steering Committee. Pechan added a filter for zero and more descriptive captions. This issue has been addressed.	Does the steering committee want to consider allowing the user to specify the number of top SCCs to display (as a system enhancement)?	1889
Standard Report #10 (Fire Summary) – data not correct.	We believe that the data received from Air Sciences has been accurately loaded and represented in the EDMS.	Pechan will demonstrate compliance within 30 days. Pechan will also add notation on the EDMS site that the EDMS is rendering data as it was submitted by the data provider.	Pechan work with Tom Moore on the accuracy issue associated with translating between FIRES format and EDMS (i.e., NIF format). This remains an open item.	1913,1928
Security – a	The resolution agreed upon with	Pechan’s responsibility is to insure, in the course of data	None.	NA

Issue Description	Proposed Resolution	Further Action Planned and Timetable	Need for Follow-up Discussion	Appendix Issue ID
data owner may upload data for a jurisdiction other than his/her own.	the Steering Committee in Fall 2004 was that since data cannot be introduced into the production database without the active engagement of the database administrator that inspects the data, the unlikely event of an agency reporting data other than its own is guarded against.	processing, that a data provider has not reported data for a different jurisdiction; the origin of all data is clearly discernable in the exiting EDMS design and practice. Pechan will document the relevant processing details, including the disposition of contractor-supplied data, in the Design As Delivered document. Pechan will be judicious about providing upload capability. Contractors are providing regional inventories.		
Security – a data owner may upload data for a jurisdiction other than his/her own (contractors).	Contractors and regional agency personnel with regional concerns may have need to upload data for many jurisdictions.	Pechan's responsibility is to review the submitted data for completeness, accuracy and reasonableness, including such checks as source type coverage, pollutant coverage, and internal consistency. Pechan will document the relevant processing details, including the disposition of contractor-supplied data, in the Design As Delivered document.	None.	NA
Fire Data and Import Functionality – EDMS does not accept Fire data; Fire Reports not active	<p>Fire inventory data, and the method by which that information would be conveyed, had not been determined by the WRAP at the time the EDMS was delivered.</p> <p>The EDMS can and does accept fire data. Fire data can and has been loaded via the EDMS user interface. To date, the fire data included in the EDMS has been provided by a contractor; these extremely large files are typically loaded by the DBA in the interest of expedience and economy of effort.</p>	Pechan will add fire type categorization to Fire Report 1 and move Standard Report 10 to the Fire Tab. Inactive reports will not be shown. Pechan will add a Fire sector option to the upload screen within 30 days. Pechan will document Ad-hoc and NIF capabilities relative to Fire data within 30 days. Pechan will present information on submitting and accessing Fire data in the User Manual and the Design As Delivered Document.	Discuss recent Fire Emissions Joint Forum meeting and status of proposed solutions.	NA

Issue Description	Proposed Resolution	Further Action Planned and Timetable	Need for Follow-up Discussion	Appendix Issue ID
	Fire data is available and can be viewed in Standard Reports 1, 10, and Fire Report 1, and is available through Ad-hoc and NIF export interfaces.			
SMOKE/IDA file export functionality – data not found for certain sectors.	This issue is being addressed and appears in the 30-day remediation category. Export to the RPO Data Exchange Format is provided by the NIF Version 3.0 Export capability. NIF is the RPO Data Exchange Format for emissions data. Compliance with this requirement will be fully documented in the Design As Delivered document.	This problem has been solved.	None.	1907 - 1909
Ad-hoc reports – data/connection errors.	The underlying problem has been identified and addressed; remaining issues will be addressed within 30 days.	As an example resolution, source data files and the EDMS Ad-hoc report interface both state VOC emissions (1331.17) for Washington Adams County, Inventory 8. This has been resolved. See the appendix for documentation of specific fixes.	None.	1891 , 1892 , 1895 , 1998, 1903 , 1930 , 1931
Standard Report #11 (biogenics) - generates a connection error.	Remediation will be completed within the 30 day period. The interface has been updated to show this condition.	Addressed.	None.	1910 , 1914
Standard Report #14 – data not organized by stack.	The tabular data in Standard Report 14 is being revised for clarity. The interface has been updated to show this condition.	Address within 30 days.	None.	2024
Standard	The capability to report CERR data	The report descriptor has been modified for clarity.	None.	1915

Issue Description	Proposed Resolution	Further Action Planned and Timetable	Need for Follow-up Discussion	Appendix Issue ID
Reports - CERR Report (Standard Report #12) is not available.	is provided by NIF Export capabilities provided to data analysts. Reporting CERR data and producing NIF Export files are identical operations provided in the EDMS through the NIF Export option in the ad-hoc query interface. The decision to deactivate the CERR Report was made by the Steering Committee amid concerns about the availability of process information to the general public. The numbering of the reports corresponds to the original requirements for the EDMS; in the interest of preserving the numbering scheme, the report was deactivated but visible (grayed out). The Steering Committee advised Pechan to present the Standard Reports without the numbering scheme, and to document the variances from the original specifications in the Design As Delivered document. This document has been started, but not completed.	Pechan will revise the Standard Reports page to eliminate the report numbers. Will we revise or leave as it is now?		
Standard Reports – Standard Reports #2 (Point Sources by Name) and	This issue was discussed with the Steering Committee in October-December 2004; disaggregation of the expression characterized as an enhancement in the Acceptance Plan. Pechan is investigating the	None	None.	NA

Issue Description	Proposed Resolution	Further Action Planned and Timetable	Need for Follow-up Discussion	Appendix Issue ID
#5 (Point Sources by Name Top 10 Report) - Facility expression includes the Facility ID at the beginning of the expression, as well as other information.	possibility of disaggregating the data.			
Section 508 concerns	<p>This issue was discussed with the Steering Committee in Fall 2004. Potential alternatives, including graphic-shading (cross-hatching) instead of color shading, were discussed; other sites similar in content, mission to the EDMS that showed areas of non-compliance were cited and discussed. Pechan proposed to include the following in the Terms & Conditions page of the EDMS:</p> <p><i>Users experiencing any difficulty with the site, including difficulty differentiating between colors, special pointing-device considerations, and/or font size issues are encouraged to contact the system administrator for personalized assistance.</i></p>	Pechan revised the text as agreed to.	None.	NA

Issue Description	Proposed Resolution	Further Action Planned and Timetable	Need for Follow-up Discussion	Appendix Issue ID
	<p>“System administrator” in the above passage is an email hyperlink. This approach was accepted by the WRAP as the method of providing complete access to all users.</p>			
<p>Dashboard concerns - confusing</p>	<p>The Dashboard issues raised in the PBTR originate in Beta testing of the EDMS. Initial implementations of the dashboard included some statistics about the content of the database. Pechan discussed the Dashboard with the EDMS Steering Committee in Fall 2004. The resolution agreed upon was that the following text be added below the Dashboard graphic:</p> <p><i>Please use the Main Menu to navigate to the feature of your choice.</i></p> <p>This modification was applied; the result is a clean and attractive main menu page. In the operational phase of the EDMS as well as in training events, users have not expressed uncertainty about the use of the dashboard. Many users have indicated that they like the dashboard and its aesthetic appeal.</p>	<p>None.</p>	<p>None.</p>	

Issue Description	Proposed Resolution	Further Action Planned and Timetable	Need for Follow-up Discussion	Appendix Issue ID
GIS Functionality – speed, layers	<p>Pechan discussed the GIS function, including the loading of layers and the volume of information transferred, with the EDMS Steering Committee in Fall 2004. The resolution agreed upon was to add an advisory to the Facility data layer noting that the volume of information managed may slow system response, and that alternate approaches to management of facility data be discussed in the future as potential enhancements.</p> <p>Two new issues that have been raised in the PBTR include the absence of a secondary roadways layer, and the absence of a layer to display modeling grids. In the development phase of the EDMS, 21 layers composed of a basic selection menu and a continuation/expansion menu were identified. Per discussion with the Steering Committee, the grid layers were not implemented since gridded data was not to be stored in the EDMS. Pechan will add verbiage to the User Manual advising users of the availability of gridded information from other WRAP-associated sources, such as the WRAP website.</p>	Pechan will document the proceedings in the Design As Delivered document. Pechan will add the secondary roadways layer. Action item: Pechan find out what is in the secondary roadways layer. This item was moved from the 60 day to the 90 day action item list.	None.	1884 , 1885

Issue Description	Proposed Resolution	Further Action Planned and Timetable	Need for Follow-up Discussion	Appendix Issue ID
Exporting JPG Files	<p>This issue was discussed with the Steering Committee in Fall 2004. The dialog that supplies the requested graphics has OPEN and SAVE buttons. Some users do experience difficulty using the OPEN button on the dialog box, however, all users can obtain the requested graphic by using the SAVE button. The resolution agreed upon was that since users had the ability to save and view the JPG files, the issue was closed. Pechan will add specific guidance in the User Manual and other communications about the use of this interface</p>	None. This has been addressed—remaining issues were resolved.	None.	NA

Table II – 2: The 30-60-90 Plan

TIMETABLE for RESOLUTION	ACTION (includes documentation)
Within 30 Days (26 March 2006)	<ul style="list-style-type: none"> • Address remaining issues in Ad-hoc export. [complete] • Address remaining issues in SMOKE/IDA file generation. [complete] • Reorganized tabular data on Standard Report – Site Report 2. [complete] • Add detail to captions on Top Ten reports. [complete] • Modify misleading caption in subtotal line of Standard Report tabular data. [complete] • Apply text delimiters to CSV files. [complete]
Within 60 Days (26 April 2006)	<ul style="list-style-type: none"> • Address remaining issues in NIF export. [complete] • Apply naming convention to system-prepared files. • Demonstrate compliance of Fire data in all system phases. • Add Fire option to upload screen. • XML Enhancement • Address report graphics for very small emissions. • GIS Secondary roadways layer.
Within 90 Days (26 May 2006)	<ul style="list-style-type: none"> • Add Fire type to Fire report 1; move standard report 10 (fire summary) to Fire tab. • As built report—this will look like the software development plan

III. EDMS System Design As Delivered Document

Upon satisfactory resolution of the issues raised in the PBTR, Pechan will prepare an EDMS System Design As Delivered Document. This document will identify and document variances from the initial design and the circumstances and resolutions associated with the variances.

IV. Forward Planning Methodology

Future activities are organized into a Priorities webpage allowing hyperlinks to more detailed information as necessary. The spreadsheet is available on the EDMS Project Website (<http://projects.pechan.com/edms/priorities.htm>). Priorities will be discussed on a regular (not less than monthly) basis with the EDMS DBA and the WRAP Technical Coordinator, as well as the Steering Committee and the Emissions Forum (not less than quarterly).

Appendix A

Entries in this appendix are organized by issue number recorded in Bugzilla. The issues range from 1879 to 1931. Issue numbers are not necessarily sequential; a break in sequence from 1920 to 1927, for example, does not imply that some issues are missing. A summary table has been provided below. Following the summary table, the status of each issue is documented.

Number	Issue	Status
1879	Typos in registration process	Addressed
1880	Missing word in timeout screen	Addressed
1881	Different column order in GIS/Standard Report	Not a bug
1882	Include Fetch Facility Data information in Help, Manual	Addressed
1883	GIS HTML report should include overlap indicator	Investigating
1884	GIS Other roadways layer	In progress (60 days)
1885	GIS Modeling Grid layer	Discussed in Table II – 1: GIS Functionality
1886	Ad-hoc query retrieval issue//typo	Could not duplicate//Addressed
1887	User Manual issues	Addressed
1888	IDD Typos	Addressed
1889	Top 10 report caption needs more information	Addressed
1890	Tabular Report summary line misleading	Addressed
1891,2,1931	Ad-hoc On-road	Addressed
1893	Standard Report 1 PM data not correct	Could not duplicate (data is correct)
1894	Ad-hoc Area sector data not correct	Could not duplicate (data is correct)
1895	Ad-hoc Area did not return data	Addressed
1896,7	Ad-hoc Point sector data not correct	Could not duplicate (data is correct)
1898, 9	Ad-hoc Non-road did not return data	Addressed
1900,1	Ad-hoc Biogenic did not return data	Addressed
1902,3,1930	Ad-hoc Fire data not correct	Addressed
1904	NIF did not return data	In progress (60 days)
1905	Rule Effectiveness not populated in text file	Investigating
1906	Ad-hoc filenames do not follow convention	In progress (30 days)
1907,8,9	SMOKE did not return data	Addressed 1908 , 1909
1910, 14	Standard Report 11 did not return data	Addressed
1911	Format of text file (csv) causes import issue	Addressed
1912	Standard Report 5 does not scale well for very small emissions	In progress (60 days)
1913,28	Standard Report #10 returns wrong data	Believe data to be correct, will document in 60 days.
1915	Standard Report #12 Inactive	Discussed in Table II-1: Standard Reports #12
1918	Standard Report for CAC unclear	Addressed
1919	Standard Report CAC3 not active	Addressed
1920	Standard Report PTSO2 returns incorrect data	Believe data to be correct,

Number	Issue	Status
		will document in 60 days.
1927	Standard Report 9 returns incorrect data	Believe data to be correct, will document in 60 days.
1929	Upload mdb filename that was a substring of zip filename was <i>not</i> rejected.	Not a bug
2024	Tabular Data in Standard Report #14 not organized by Stack	Addressed

1879

Issue: Typos in registration process

Status: Addressed

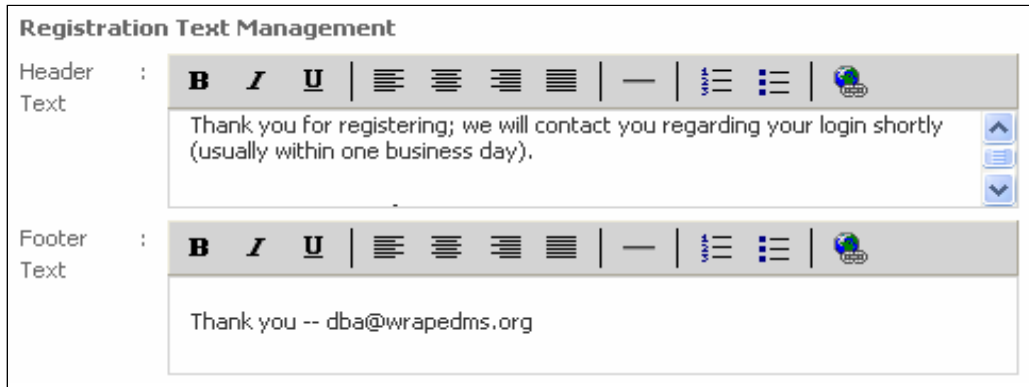


Figure A-1: Registration Management Text Interface

1880

Issue: Missing Word in timeout screen

Status: Addressed

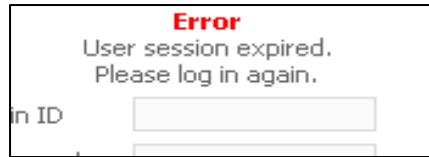


Figure A-2: Screen Image of Revised Text

1882

Issue: Include Fetch Facility Data Information in Help, Manual

Status: Addressed

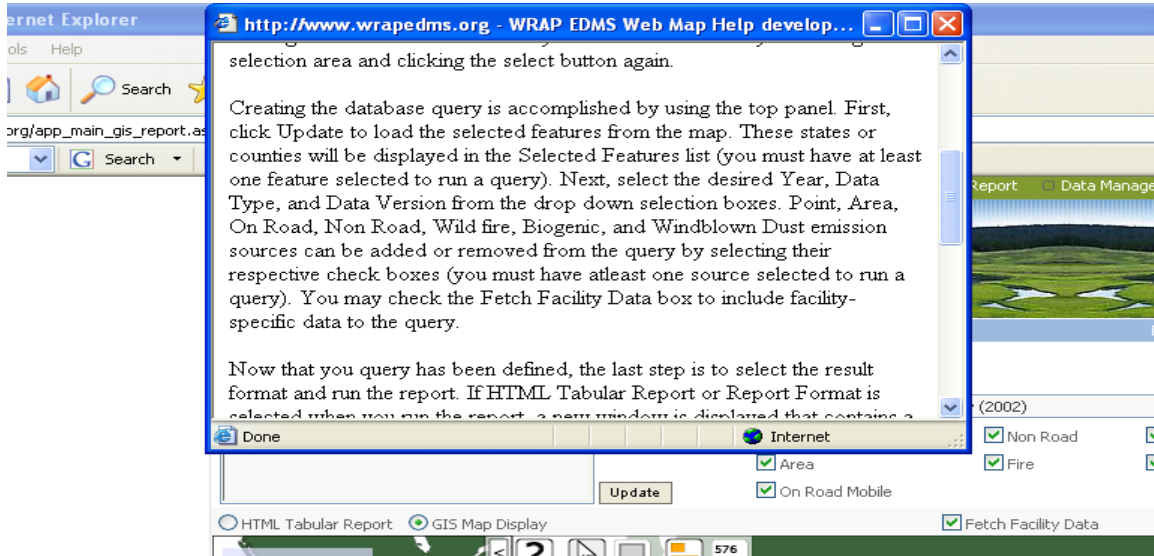


Figure A-3: Screen Image of Revised EDMS Text

menu and check box values may be changed to create several different query combinations. The Fetch Facility Data box adds facility-specific data to the query and results. Finally, selecting the type of results (html tabular report or GIS Map Display) and clicking Run Report will send the query to the database and return the results. If the results were to be sent to the map (GIS Display was selected), select the pointer tool and move the mouse over queried features. The data window will display a bar graph and/or text numerical values. Otherwise, a window will be opened that contains the results of the query.

Figure A-4: Image of Revised User Manual Text

Issue 1891, 1892, 1931: Ad Hoc Report using On-road Mobile data returned wrong values.

Status: Addressed.

Data Used for Test: State of Washington (53), Adams County (001); pollutants VOC, NOX; Inventory 8

Data Values from source Data:

File: WRAP2002_OR_nonCA_nifv3_082205.mdb

Values: VOC = 1331.17; NOX = 1950.14

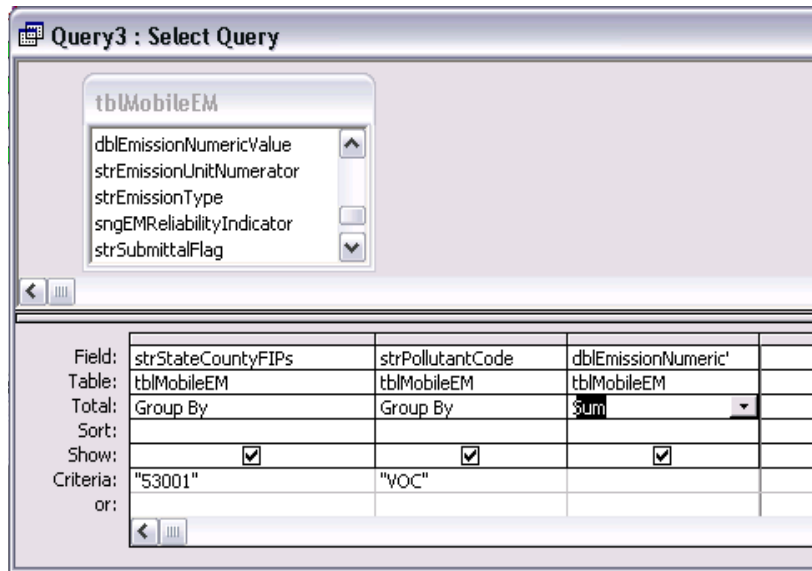


Figure A-5: Query of Source Data

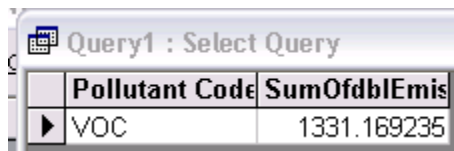


Figure A-6: Example Result from Source Data

Data Values from Ad-hoc Report

Values: VOC = 1331.17; NOX = 1950.14

ad_hoc : Table							
fipsst	fipscnty	STID	CYID	SCC	VOC_ANN	NOX_ANN	
53	001	53	1	2201001110	258.785	243.82	
53	001	53	1	2201001130	194.91	164.98	
53	001	53	1	2201020110	137.97	124.1	
53	001	53	1	2201020130	102.565	84.315	
53	001	53	1	2201001170	92.345	73.365	
53	001	53	1	2201001190	88.33	67.89	
53	001	53	1	2201001210	67.89	52.56	
53	001				62.78	61.685	
53	001				48.545	37.595	
53	001				47.085	42.34	
53	001				46.355	34.6385	
53	001				35.7335	26.6815	
53	001				22.3745	18.7975	
53	001	53	1	2201040190	21.4985	17.374	
53	001	53	1	2201040210	16.574	12.350	

Query1 : Select Query			
fipscnty	SumOfVOC_ANN	SumOfNOX_ANN	
001	1331.1687	1950.1417	

Record: 1 of 1

Figure A-7: Result from EDMS Ad-hoc File

Issue 1889: Top 10 Reports need additional caption.
Status: .

Nature of Modification: Certain datasets (queries) can return more or fewer than 10 results. Explanation has been added to the report.

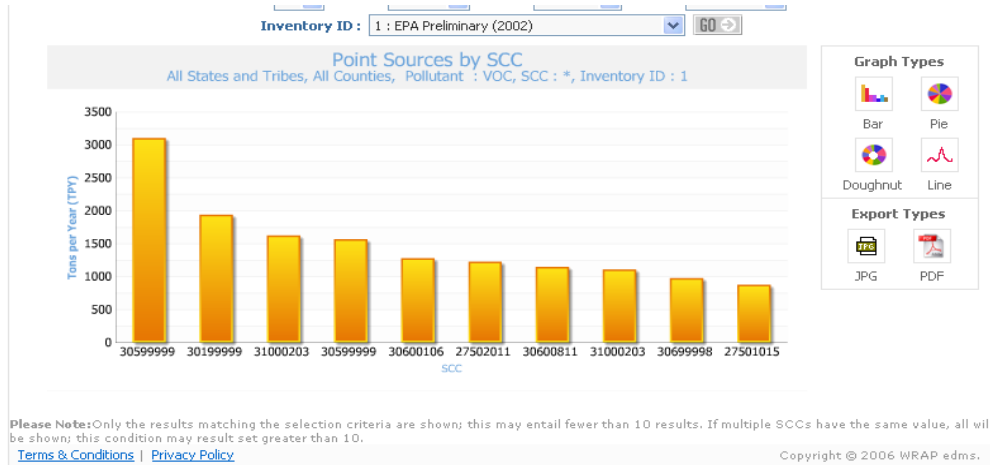


Figure A-8: Additional Captioning for Top 10 Reports

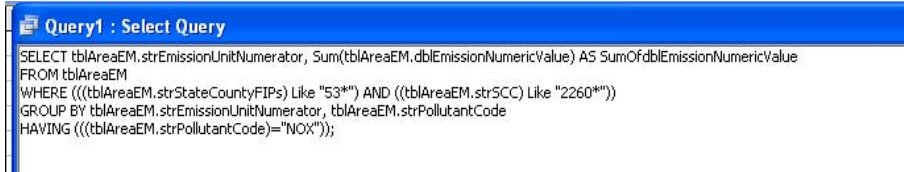
Issue 1898, 1899: Ad Hoc Report using Non-road Mobile data returned wrong values.
Status: Addressed.

Data Used for Test: State of Washington (53), all counties; pollutant NOX; Inventory 8

Data Values from source Data:

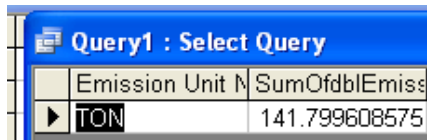
File: WRAP2002_NR_nifv3_060905.mdb

Values: NOX = 141.8



```
Query1 : Select Query
SELECT tblAreaEM.strEmissionUnitNumerator, Sum(tblAreaEM.dblEmissionNumericValue) AS SumOfdblEmissionNumericValue
FROM tblAreaEM
WHERE (((tblAreaEM.strStateCountyFIPs) Like "53*") AND ((tblAreaEM.strSCC) Like "2260*"))
GROUP BY tblAreaEM.strEmissionUnitNumerator, tblAreaEM.strPollutantCode
HAVING (((tblAreaEM.strPollutantCode)="NOX"));
```

Figure A-9: Source File Query



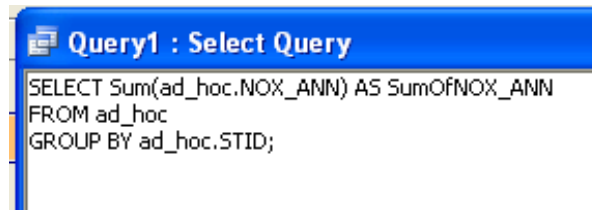
Emission Unit N	SumOfdblEmiss
TON	141.799608575

Figure A-10: Source File Result

Data Values from EDMS:

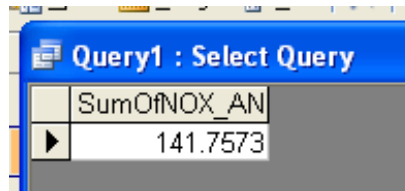
File: Ad-hoc result generated from EDMS

Values: NOX = 141.8



```
Query1 : Select Query
SELECT Sum(ad_hoc.NOX_ANN) AS SumOfNOX_ANN
FROM ad_hoc
GROUP BY ad_hoc.STID;
```

Figure A-11: EDMS Ad-hoc File Query



SumOfNOX_ANN
141.7573

Figure A-12: EDMS Ad-hoc File Result

Issue 1902, 1903, 1930: SMOKE Fire did not return data.
 Status: Addressed

Data Used for Test: State of Montana (30), Beaverhead County (001); pollutant VOC;
 Inventory 8

Data Values from Control (Standard Reports):
 VOC Values (rounded): 891

Criteria >>State : Montana, County : Beaverhead County, Sector : Fire, Inventory ID : 8

	STATE	COUNTY	VOC (TPY)	NOX
REPORT TOTAL			891	
	30 MONTANA		891	
		001 BEAVERHEAD COUNTY	891	

Figure A-13: Data From Standard Report

Data Values from Ad-hoc Report:

VOC Values: 13.47 + 743.55 + 41.47 + 47.94 + 44.86 = 891.29

```

*****
Export Criteria:
State : 30
County : 30001, 30003, 30005, 30007
SCC : *
INVENTORY_ID : 8
Date : 3/14/2006 9:44:23 AM
System: http://wrapedms.org
Export Columns:
Fipsst, Fipscty, STID, CYID, SCC, VOC_ANN, VOC_OSD, VOC_EMF, VOC_CE, VOC_RE, VOC_RP, NOX_ANN, NOX_OSD, NOX_EMF, NOX_CE, NOX_RE, NOX_RP
SO2_OSD, SO2_EMF, SO2_CE, SO2_RE, SO2_RP, PM_PRI_ANN, PM_PRI_OSD, PM_PRI_EMF, PM_PRI_CE, PM_PRI_RE, PM_PRI_RP, PM_FIL_ANN, PM_FIL_O
_PRI_ANN, PM10_PRI_OSD, PM10_PRI_EMF, PM10_PRI_CE, PM10_PRI_RE, PM10_PRI_RP, PM25_PRI_ANN, PM25_PRI_OSD, PM25_PRI_EMF, PM25_PRI
_OSD, PM10_FIL_EMF, PM10_FIL_CE, PM10_FIL_RE, PM10_FIL_RP, PM25_FIL_ANN, PM25_FIL_OSD, PM25_FIL_EMF, PM25_FIL_CE, PM25_FIL_RE, PM
N_CE, PM_CON_RE, PM_CON_RP, NH3_ANN, NH3_OSD, NH3_EMF, NH3_CE, NH3_RE, NH3_RP, EC_ANN, EC_OSD, EC_EMF, EC_CE, EC_RE, EC_RP, OC_ANN, OC
_EMF, CH4_CE, CH4_RE, CH4_RP
*****
"30", "001", "2801500000", 13.4659416, 5.677976, 144.8834194, 0.7559916, 19.9939226, 19.6319208, 18.7239176, 2.9019866, 4.7999864, 8.4319684, 9.8039586,
"30", "001", "281001000", 743.5476457, 338.9702537, 13500.3875617, 92.9434581, 1864.3363912, 1336.3006653, 1317.6101786, 41.369184, 23.517913, 71.0744132, 82.0089368, 634.2024063, 743.5476457,
"30", "001", "2810015000", 41.369184, 23.517913, 71.0744132, 82.0089368, 634.2024063, 743.5476457, 78.4533867, 68.8797204, 47.9355286, 21.8529566, 1018.6298938, 5.9919414, 120.1912829,
"30", "001", "2810015001", 47.9355286, 21.8529566, 1018.6298938, 5.9919414, 120.1912829, 99.0432499, 84.9445719, 44.8620204, 18.8773236, 477.9126866, 2.5192874, 67.7630304,
"30", "001", "2810016001", 44.8620204, 18.8773236, 477.9126866, 2.5192874, 67.7630304, 66.67233, 63.7392436, 4.5939828, 1.913991, 50.919798, 0.2839978, 6.3519798,
"30", "003", "2801500000", 4.5939828, 1.913991, 50.919798, 0.2839978, 6.3519798, 6.2199726, 5.9599756, 1.041996, 1.405996, 2.6239862, 2.8999926,
"30", "003", "2810001000", 11.193943, 5.1031314, 237.8713347, 1.3992418, 28.0671713, 23.1286648, 19.8363315, 1.0700141, 1.2346258, 9.5477809, 11.193943,
"30", "003", "2810015001", 89.106843, 40.6222376, 1893.520426, 11.1383552, 223.4223068, 184.1104636, 157.9025686, 101.3765906, 42.657931, 1079.9622794, 5.6933788, 153.1274894,
"30", "003", "2810016001", 101.3765906, 42.657931, 1079.9622794, 5.6933788, 153.1274894, 150.6626988, 144.0346206, 4.2739516, 1.806021, 47.3717908, 0.2979614, 5.8440212,
"30", "005", "2801500000", 4.2739516, 1.806021, 47.3717908, 0.2979614, 5.8440212, 5.777942, 5.5299776, 0.9599564, 1.323962, 2.4159844, 2.6980134,
"30", "005", "281001000", 0.2073994, 0.0945502, 4.407232, 0.0259245, 0.5200228, 0.4285236, 0.3675232, 0.0198253, 4.07232, 0.0228749, 0.1768992, 0.2073994,
"30", "005", "2810015000", 0.6199172, 0.6100776, 7.3110916, 0.1672788, 1.1807954,

```

Figure A-14: Data From Ad-hoc Report

Issue 1907: SMOKE Area did not return data.
Status: Addressed.

Data Used for Test: State of California (06), San Joaquin County (077); pollutants VOC, NOX, CO, SO2; Inventory 8; SCC= 2415*

Data Values from Control (Standard Reports):

VOC Values (rounded): SCC 2415000000 = 142; SCC 2415100000 = 32; SCC 2415300000 = 419

077 SAN JOAQUIN CO		592
2415000000 Solvent Utilization Degreasing All Processes/All Industries Total: All Solvent Types		142
2415100000 Solvent Utilization Degreasing All Industries: Open Top Degreasing Total: All Solvent Types		32
2415300000 Solvent Utilization Degreasing All Industries: Cold Cleaning Total: All Solvent Types		419

Figure A-15: Result from EDMS Standard Report

Data Values from SMOKE export:

VOC Values: SCC 2415000000 = 141.536; SCC 2415100000 = 31.908; SCC 2415300000 = 418.515

```

030706084355.txt - Notepad
File Edit Format View Help
*****
Export Criteria:
State : 06
County : 06077
Pollutant :VOC, NOX, CO, SO2
Date : 3/7/2006 8:39:55 AM
System: http://wrapedms.org
Export columns:
STID,CYID,SCC,VOC_ANN, VOC_OSD, VOC_EMF, VOC_CE, VOC_RE, VOC_RP,NOX_ANN,
SO2_OSD, SO2_EMF, SO2_CE, SO2_RE, SO2_RP
*****
6 772415000000 141.536 0.000 0.000 0.000 0 0 0.000
0.000 0.000 0.000 0 0
6 772415300000 418.515 0.000 0.000 0.000 0 0 0.000
0.000 0.000 0.000 0 0
6 772415100000 31.908 0.000 0.000 0.000 0 0 0.000
0.000 0.000 0.000 0 0
6 772420000999 3.283 0.000 0.000 0.000 0 0 0.000
0.000 0.000 0.000 0 0
6 772420000370 1.600 0.000 0.000 0.000 0 0 0.000
0.000 0.000 0.000 0 0

```

Figure A-16: Result from EDMS SMOKE Export

Issue 1908: SMOKE Non-road did not return data.
Status: Addressed.

Data Used for Test: State of Washington (53), Spokane County (053); pollutant VOC;
 Inventory 8

Data Values from Control (Standard Reports):
 VOC : SCC 226703020 = 72; SCC 226703030 = 1

	A	B	C	D	E	F	G	H
1		STATE	COUNTY	SCC	VOC (TPY)	NOX (TPY)	SO2 (TPY)	PM_FIL (T
2	REPORT TOTAL				3678	5029	527	0
3		53 WASHINGTON			3678	5029	527	0
4			063 SPOKANE CO		3678	5029	527	0
19				2267003010 Mobile S	1	3	0	0
20				2267003020 Mobile S	72	266	0	0
21				2267003030 Mobile S	1	2	0	0
22				2267003040 Mobile S	0	1	0	0
23				2267003050 Mobile S	0	0	0	0

Figure A-17:

Data Values from SMOKE export:
 VOC : SCC 226703020 = 71.74; SCC 226703030 = .565

```

031006105832.txt - Notepad
File Edit Format View Help
*****
Export Criteria:
State : 53
County : 53063
Pollutant : VOC
Date : 3/10/2006 10:58:10 AM
System: http://wrapeds.org
Export Columns:
STID,CYID,SCC,VOC_ANN, VOC_OSD, VOC_EMF, VOC_CE, VOC_RE, VOC_RP
*****
53 632267003020 71.740 0.000 0.000 0.000 0 0
53 632267003010 0.776 0.000 0.000 0.000 0 0
53 632267003070 0.345 0.000 0.000 0.000 0 0
53 632267003030 0.565 0.000 0.000 0.000 0 0
53 632267003050 0.040 0.000 0.000 0.000 0 0
53 632267003040 0.173 0.000 0.000 0.000 0 0
53 632267006010 0.669 0.000 0.000 0.000 0 0
  
```

Figure A-18:

Issue 2024: Tabular Data in Standard Report – Site Report 2 not organized logically.
Status: Addressed.

Nature of Modification: In tabular report, site data organized by stack emissions now more clearly portrayed.

B	C	D	E	F	G	H	I	J	K	L	M
STATE	COUNTY	PLANT	STACK ID	STACK TYPE	STACK DESCR	STACK HEIGHT	LONGITUDE	LATITUDE	COORDIN	INVENTOF	VOC (TPY NO)
04 ARIZONA											1841
	001 APACHE CO										1841
		0035 EL PASO NATU	001	02		35	-109.515150	35.429475	LATLON	8	1208
		0035 EL PASO NATU	002	02		27	-109.515150	35.429475	LATLON	8	130
		0035 EL PASO NATU	003	02		27	-109.515150	35.429475	LATLON	8	135
		0035 EL PASO NATU	004	02		27	-109.515150	35.429475	LATLON	8	4
		0035 EL PASO NATU	005	02		28	-109.515150	35.429475	LATLON	8	94
		040012474 WENDEN	1	02	TURBINE-1	51	-111.453085	34.359444	LATLON	8	3
		040012474 WENDEN	2	02	TURBINE-2	35	-111.453085	34.359444	LATLON	8	2
		040013222 TUCSON	0	01		10	-109.275487	34.128074	LATLON	8	0
		040013222 TUCSON	1	02	UNIT NO. 1	500	-109.275487	34.128074	LATLON	8	47
		040013222 TUCSON	2	02	UNIT NO. 2	500	-109.275487	34.128074	LATLON	8	51
		040014477 SALT RIV	0	02		500	-109.353377	34.799923	LATLON	8	0
		040014477 SALT RIV	1	02	UNIT 1	500	-109.269996	34.569999	LATLON	8	39
		040014477 SALT RIV	2	02	UNIT 2	500	-109.269996	34.569999	LATLON	8	41
		040019560 ALAMO	1	02	TURBINE-1	40	-113.545841	33.870004	LATLON	8	1

Figure A-19: Site Report 2 Organized by Plant, Stack

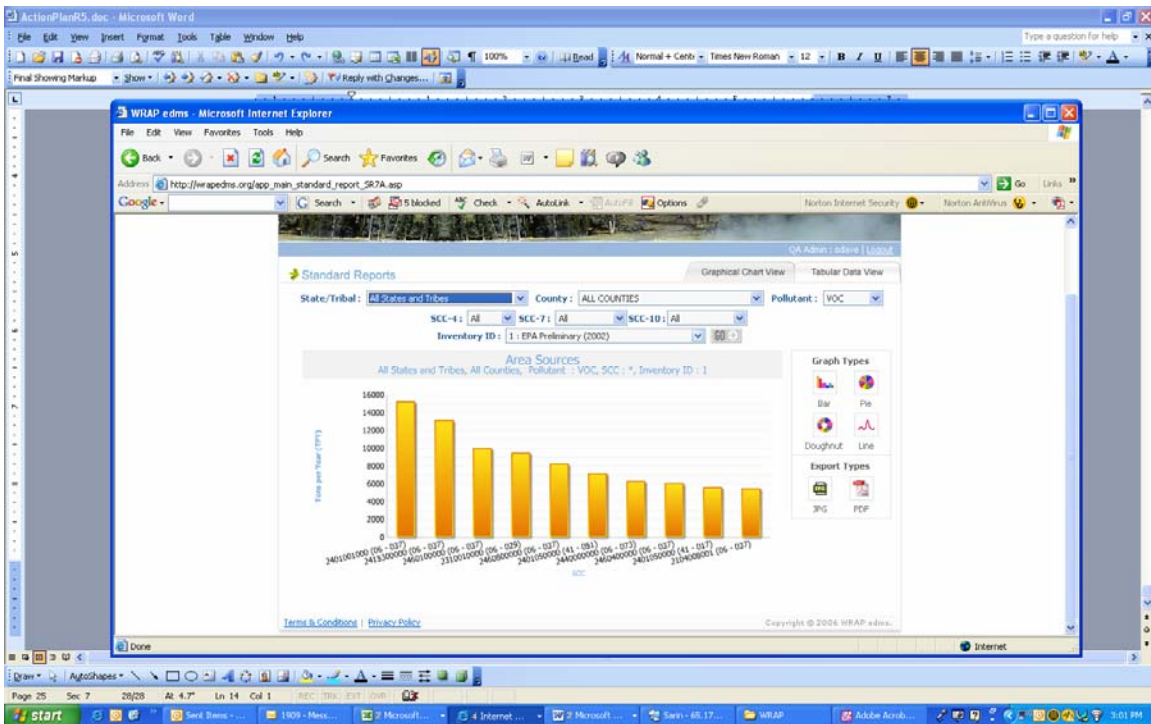


Figure A-20: