

WESTERN REGIONAL AIR PARTNERSHIP

EMISSIONS DATA MANAGEMENT SYSTEM

**DBA Report
December 2005**

DRAFT

PECHAN

5528-B Hempstead Way
Springfield, VA 22151

703-813-6700 telephone
703-813-6729 facsimile

3622 Lyckan Parkway
Suite 2002
Durham, NC 27707

919-493-3144 telephone
919-493-3182 facsimile

P.O. Box 1345
El Dorado, CA 95623

530-295-2995 telephone
530-295-2999 facsimile

Prepared for:
Western Regional Air Partnership
Emissions Data Management System
Steering Committee

-and-

Western Governor's Association
1515 Cleveland Place
Suite 200
Denver, Colorado 80202

Prepared by:

E.H. Pechan & Associates, Inc.
3622 Lyckan Parkway, Suite 2002
Durham, NC 27707

January 30, 2006

Contract No. #30204-78
Pechan Report No. 9490.002.012

[This page intentionally left blank.]

Table of Contents

I. Introduction	1
II. Hours by Activity Type.....	1
A. Overview.....	1
B. Detail	2
III. Hours by Staff Type.....	3
IV. User Information.....	3
A. New Registrations.....	3
B. Privilege Promotions.....	3
C. User Census.....	4
V. Web Traffic.....	5
VI. Finances	5
VII. Analysis.....	7
VIII. Plans For The Next Reporting Period.....	7

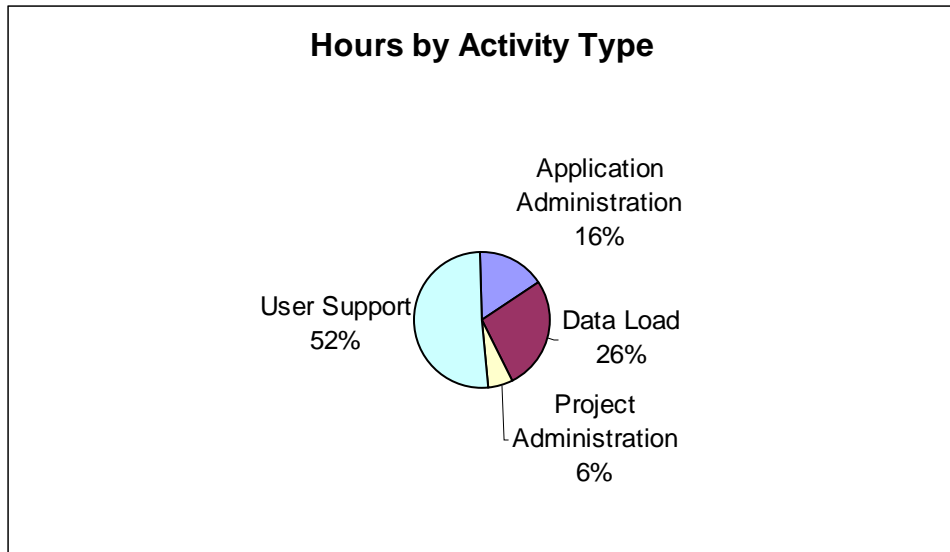
I. Introduction

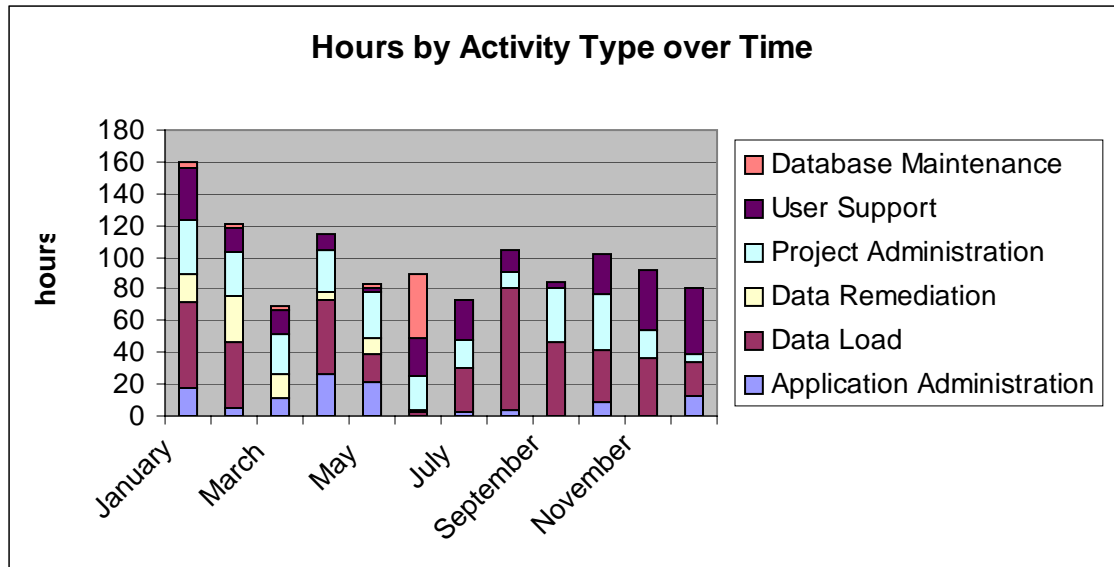
This report details the activities associated with the operation and maintenance of the Emissions Data Management System (EDMS) for the report period.

II. Hours by Activity Type

A. Overview

Activity	Time	Percentage
Application Administration	13	16%
Data Load	21	26%
Project Administration	4.5	6%
User Support	41.5	52%
	80	





B. Detail

Entries in this section are taken directly from activity logs and have been minimally edited.

Data Load

- Continued preparation of Inventory 9 for distribution, including interface with other inventory contractors and data providers, including reload of several sectors;
- Received and began initial processing of projection-year inventories.

Project Administration

- Prepared Monthly Progress Report;
- Completed DBA report; and
- Worked with ERG on Acceptance Testing plans.

User Support

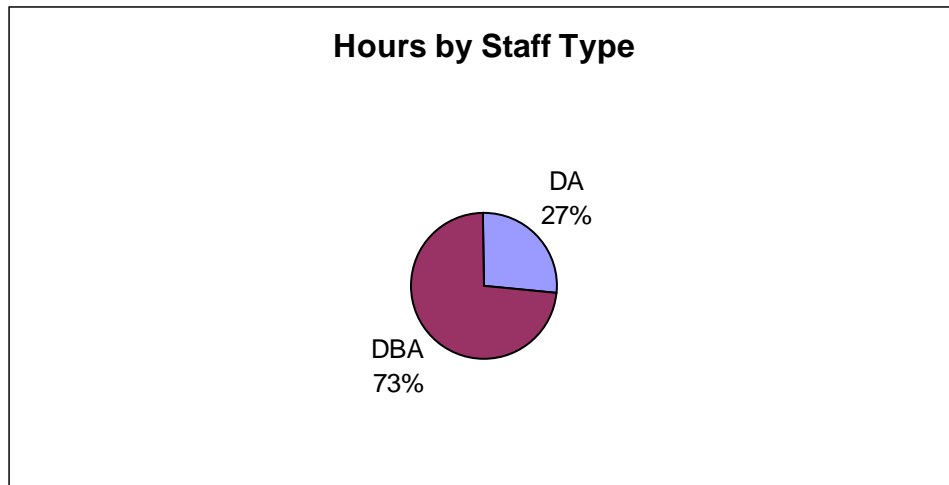
- Prepared and disseminated the EDMS User Bulletin;
- Worked with users requesting assistance; and
- Prepared and delivered general user training December 5.

Application Administration

- Investigated issues reported in Acceptance Testing process.

III. Hours by Staff Type

DA/DBA	Hours	Percentage
DA	14.5	18%
DBA	65.5	82%
Total	80	



IV. User Information

A. New Registrations

NAME
Bruce Oskolkoff
Beth Hatter
Dan Johnson
Alan Ballard
Chris Ramsdell
Randy Ashley
Ran
Cheng T. Shih
Gopi Manne
Dale M. Wells
Curtis Taipale
Dan Catlin
Michael S. Doyle

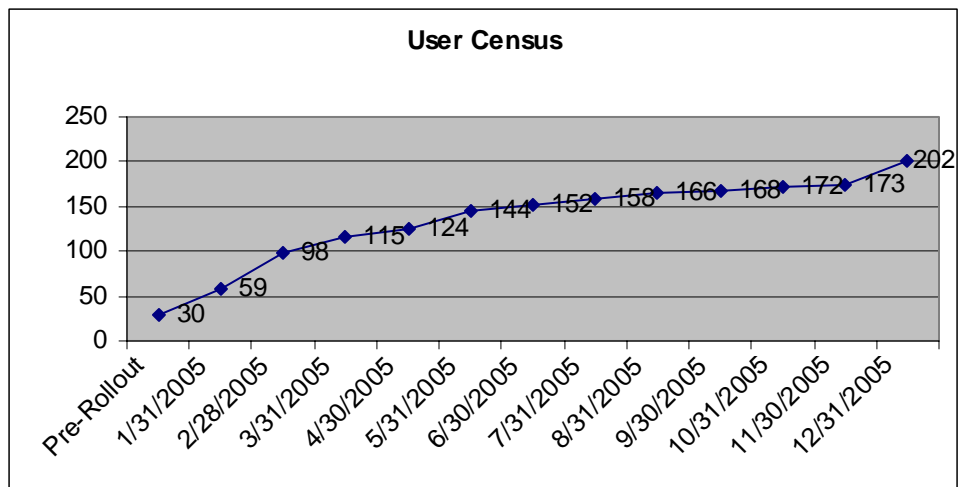
NAME
John Grant
Brenda Harpring
Scott Takamoto
Danny Zamora
Dave DuBois
Shawn Urbanski
Ying Hsu
Rodger Ames
David Sellers
David Azzam
Cole Anderson
Ryan Alam
Robert K. Jeffrey
Kevin Kihara

B. Privilege Promotions

Dale Wells, Curtis Taipale, Dan Catlin, David Dubois, Rodger Ames, and Kevin Kihara were converted to data analyst. John Grant and Brenda Harpring were converted to Data owner.

C. User Census

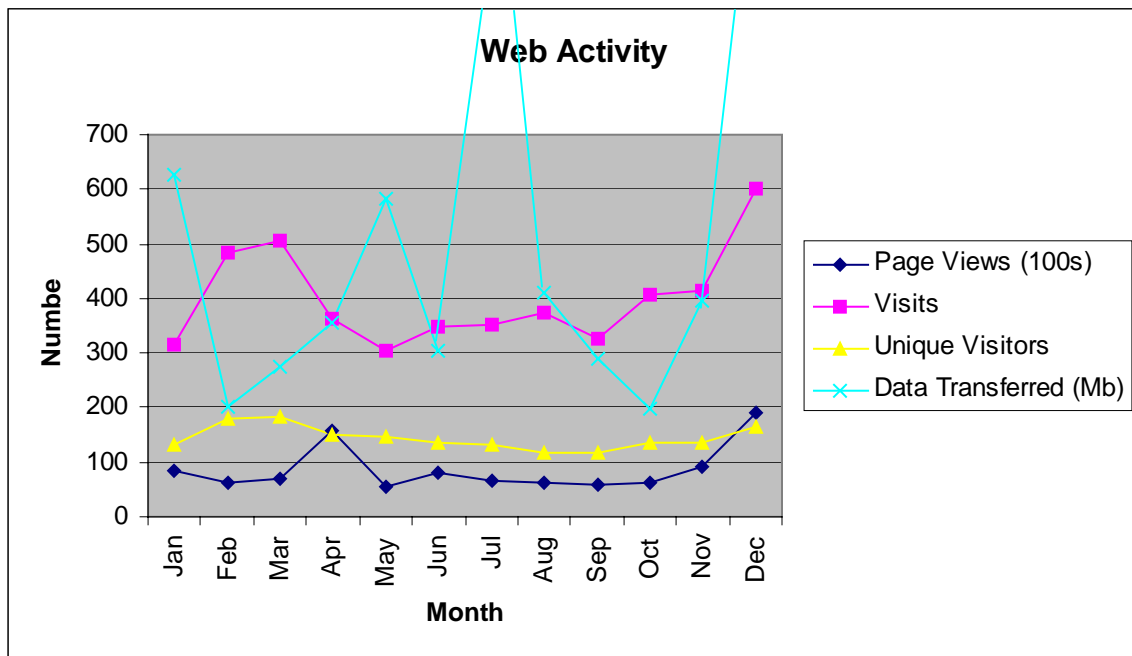
General Users: 154
 Data Analysts: 23
 Data Owners: 25
Total 3/28/2005: 202



V. Web Traffic

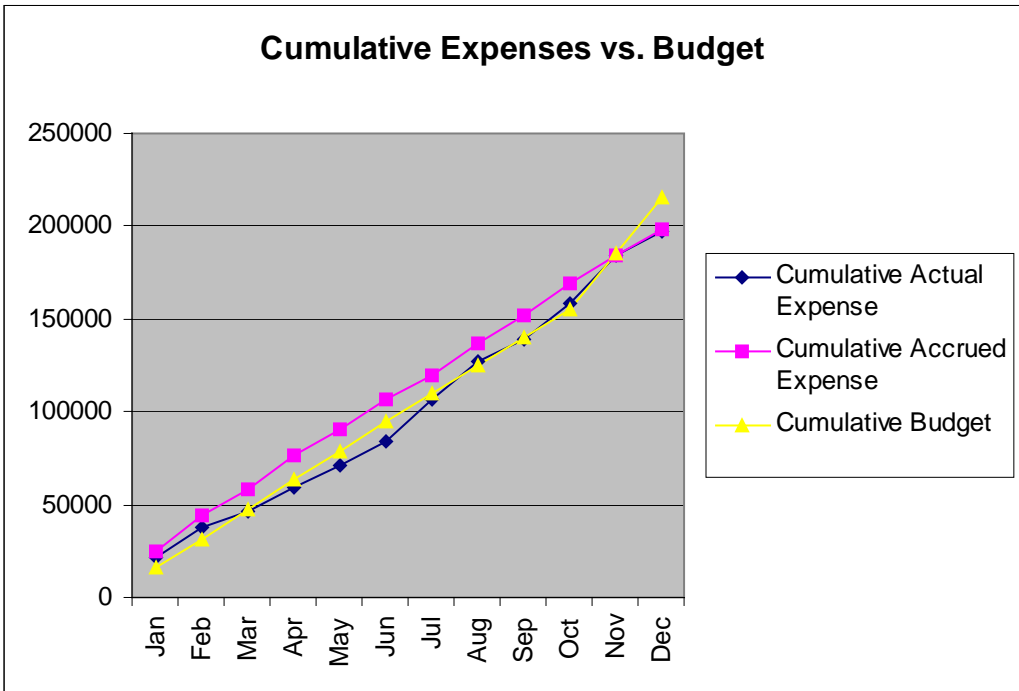
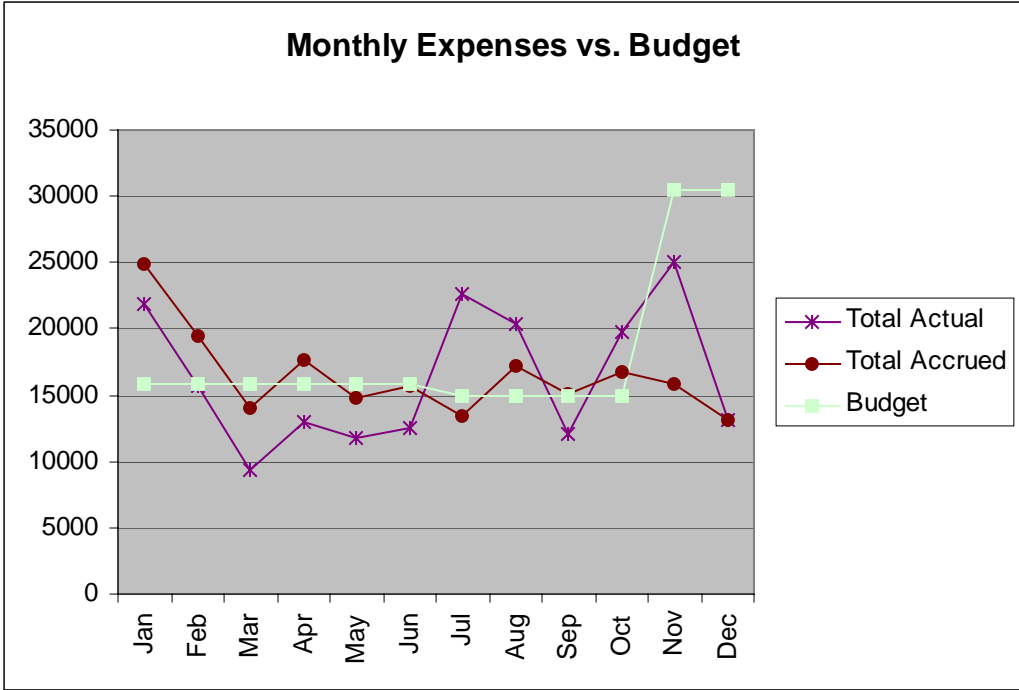
Web activity for the reporting period is characterized in the table and chart that follow.

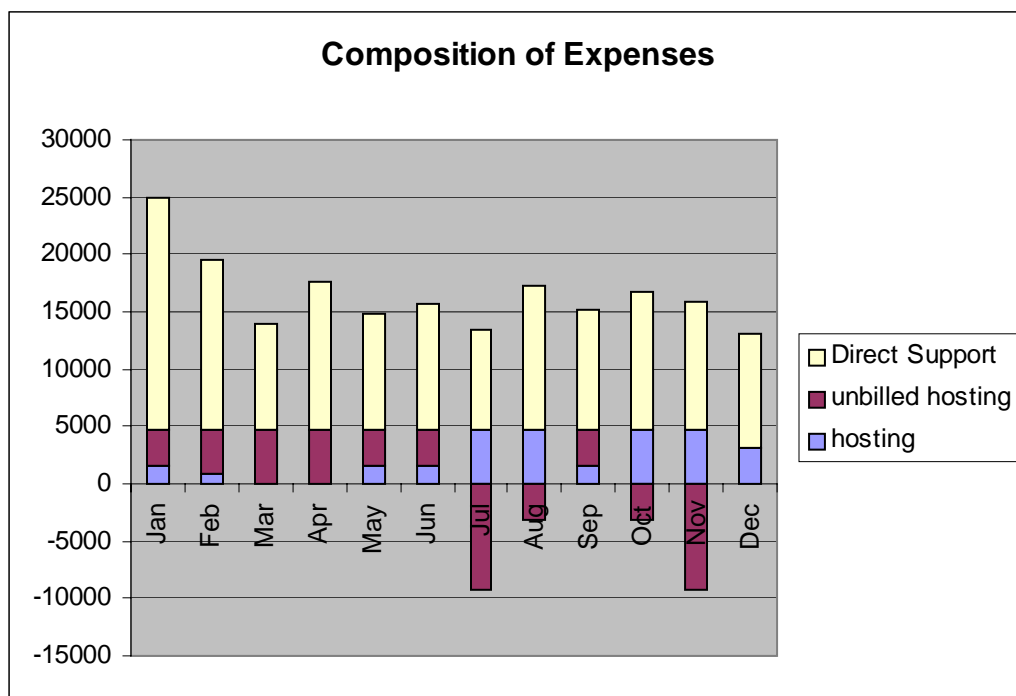
Activity	Number
Page Views	19169
Visits	414
Unique Visitors	137
Data Transferred (Mb)	6,823



VI. Finances

During December, 80 technical hours and \$13,162 were expended of which approximately \$1,500 was hosting and \$1,400 was direct cost associated with the December 5, 2005 training event. Some direct labor did not post at the time the invoice was prepared.





VII. Analysis

Support posted in December was 10% lower than November and less than the average monthly expenditure. The project ended under budget (with revisions) for the year.

VIII. Plans For The Next Reporting Period

- Continue implementing data corrections and updates, initiation of Actual Inventory 9 (2002 Actual – version 1.4);
- Continue preparation of projection-year inventories;
- Assist and respond to Acceptance Testing; and
- Prepare monthly reports.