

WESTERN REGIONAL AIR PARTNERSHIP

EMISSIONS DATA MANAGEMENT SYSTEM

**DBA Report
August 2005**

DRAFT

PECHAN

5528-B Hempstead Way
Springfield, VA 22151

703-813-6700 telephone
703-813-6729 facsimile

3622 Lyckan Parkway
Suite 2002
Durham, NC 27707

919-493-3144 telephone
919-493-3182 facsimile

P.O. Box 1345
El Dorado, CA 95623

530-295-2995 telephone
530-295-2999 facsimile

Prepared for:
Western Regional Air Partnership
Emissions Data Management System
Steering Committee

-and-

Western Governor's Association
1515 Cleveland Place
Suite 200
Denver, Colorado 80202

Prepared by:

E.H. Pechan & Associates, Inc.
3622 Lyckan Parkway, Suite 2002
Durham, NC 27707

September 20, 2005

Contract No. #30204-78
Pechan Report No. 9490.002.007

[This page intentionally left blank.]

Table of Contents

I. Introduction	1
II. Hours by Activity Type.....	1
A. Overview.....	1
B. Detail	2
III. Hours by Staff Type.....	3
IV. User Information.....	3
A. New Registrations.....	3
B. Privilege Promotions.....	3
C. User Census.....	4
V. Web Traffic.....	4
VI. Finances	5
VII. Analysis.....	6
VIII. Plans For The Next Reporting Period.....	7

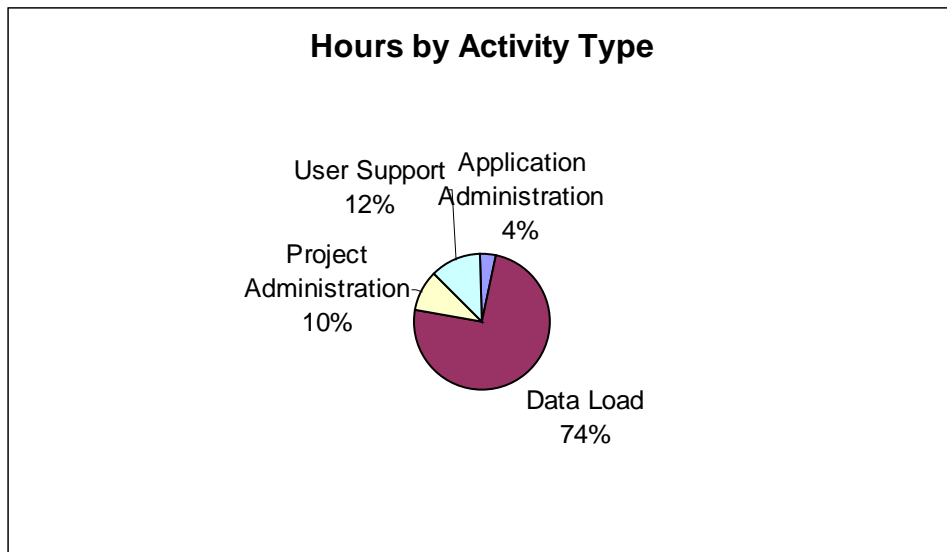
I. Introduction

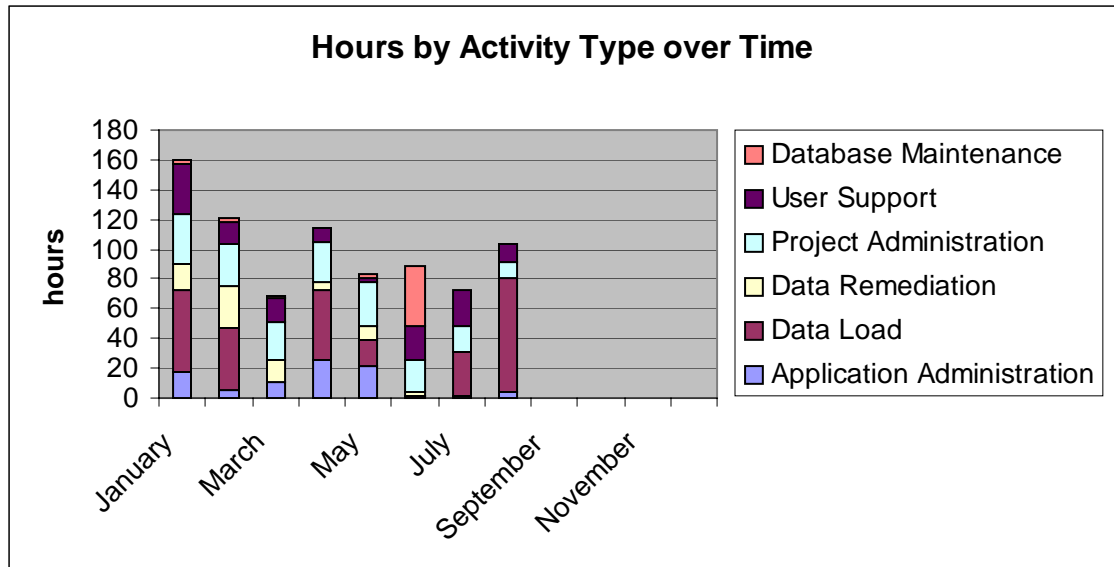
This report details the activities associated with the operation and maintenance of the Emissions Data Management System (EDMS) for the report period.

II. Hours by Activity Type

A. Overview

Activity	Time	Percentage
Application Administration	4	4%
Data Load	77	74%
Project Administration	10.5	10%
User Support	13	12%
	104.5	





B. Detail

Entries in this section are taken directly from activity logs and have been minimally edited.

Application Administration

- Initiated updates the Data Submission Maps.

Data Load

- Prepared Inventory 7 for distribution, including interface with Nonroad and Fire inventory contractors, as well as state, county, and tribal data providers.
- Prepared Inventory 8 for distribution, including interface with onroad, point, area, and Fire inventory contractors.

Project Administration

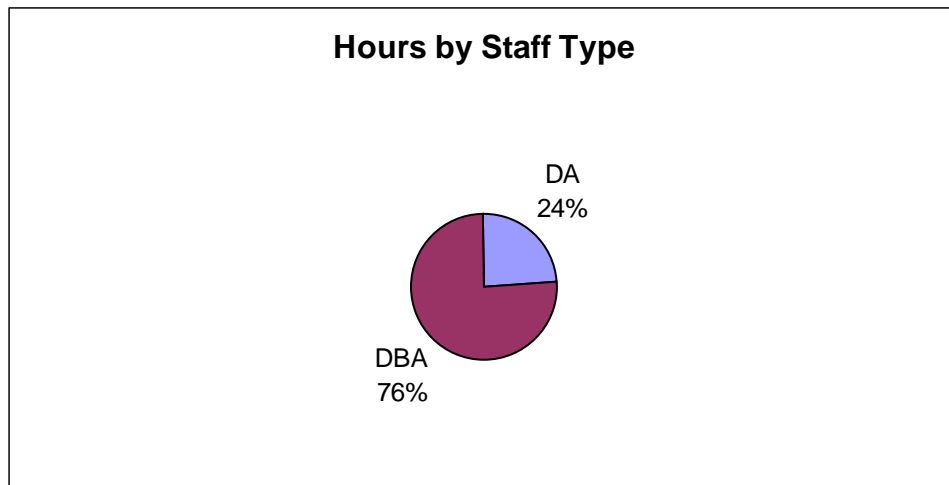
- Prepared Monthly Progress Report;
- Completed DBA report;
- Prepared for and completed Interim status call; and
- Prepared for and completed Steering Committee status call; and
- Prepared and posted minutes of Steering Committee.

User Support

- Assisted users with data issues, notably Thomas Andretta and Lori Campbell; and
- Prepared and disseminated the first EDMS User Bulletin;

III. Hours by Staff Type

DA/DBA	Hours	Percentage
DA	25	24%
DBA	79	76%
Total	104	



IV. User Information

A. New Registrations

NAME
Shawn McClure
Rodger Ames
Erik Aaboe
Brian Finneran
Martin Johnson
Tim

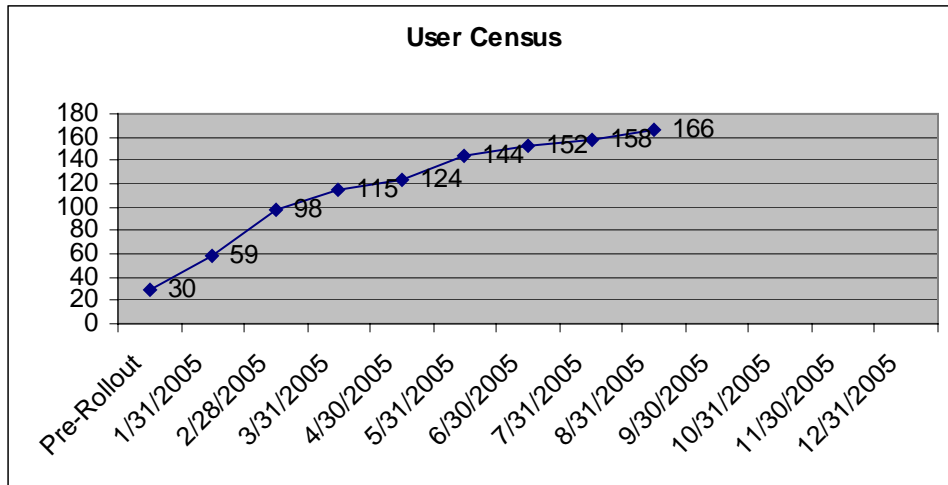
B. Privilege Promotions

None this period.

C. User Census

The following data is taken from the EDMS database and may differ from counts taken by other means.

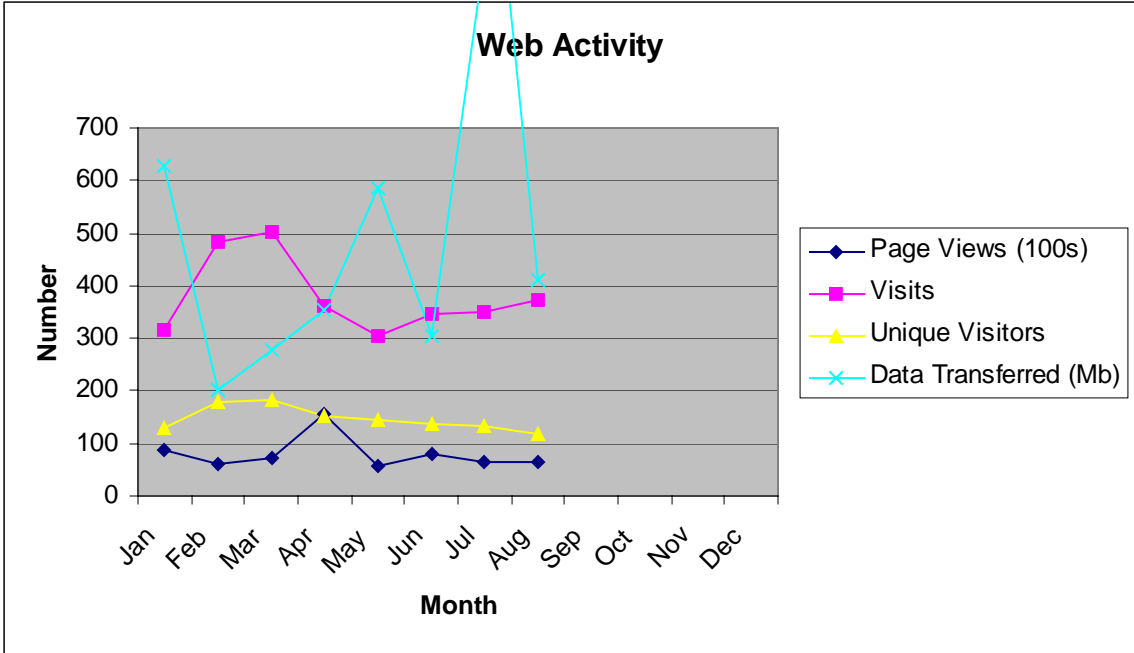
General Users:	128
Data Analysts:	18
Data Owners:	20
Total 3/28/2005:	166



V. Web Traffic

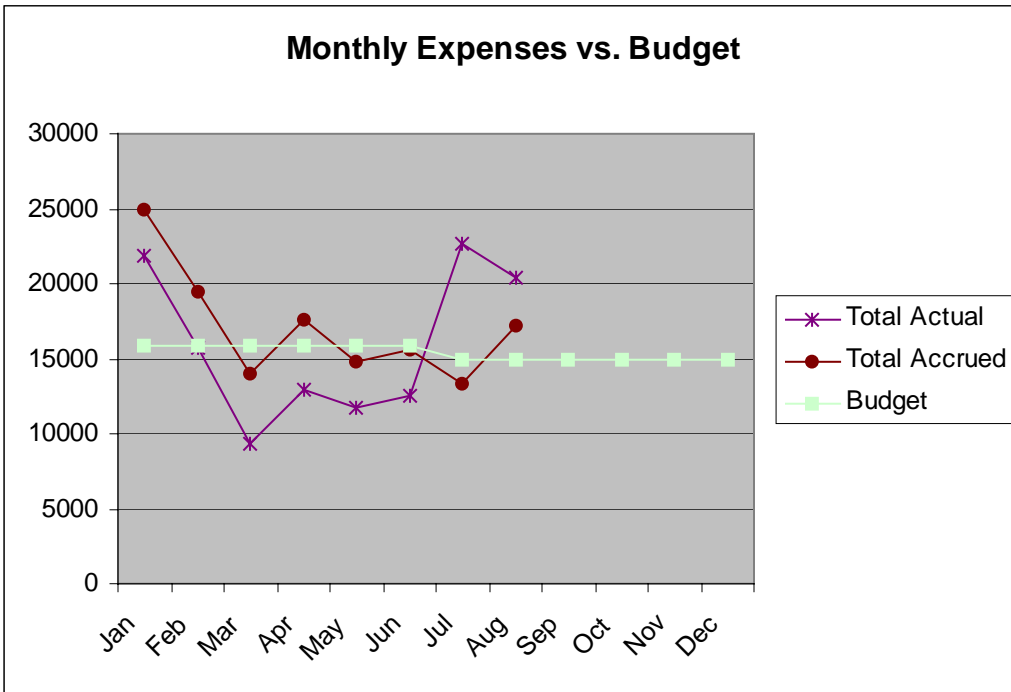
Web activity for the reporting period is characterized in the table and chart that follow.

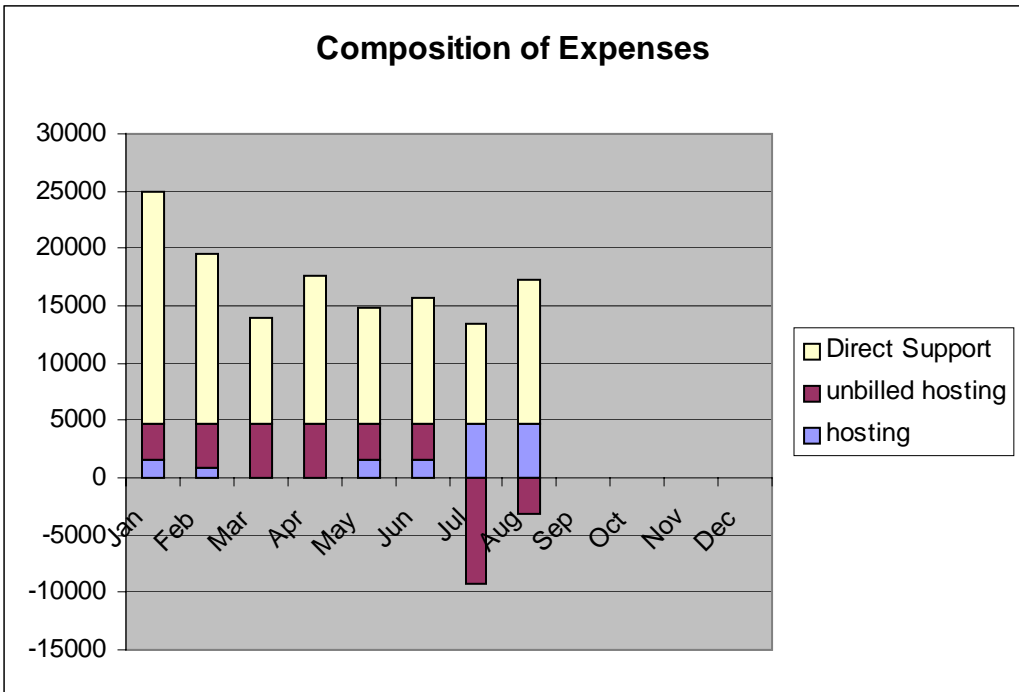
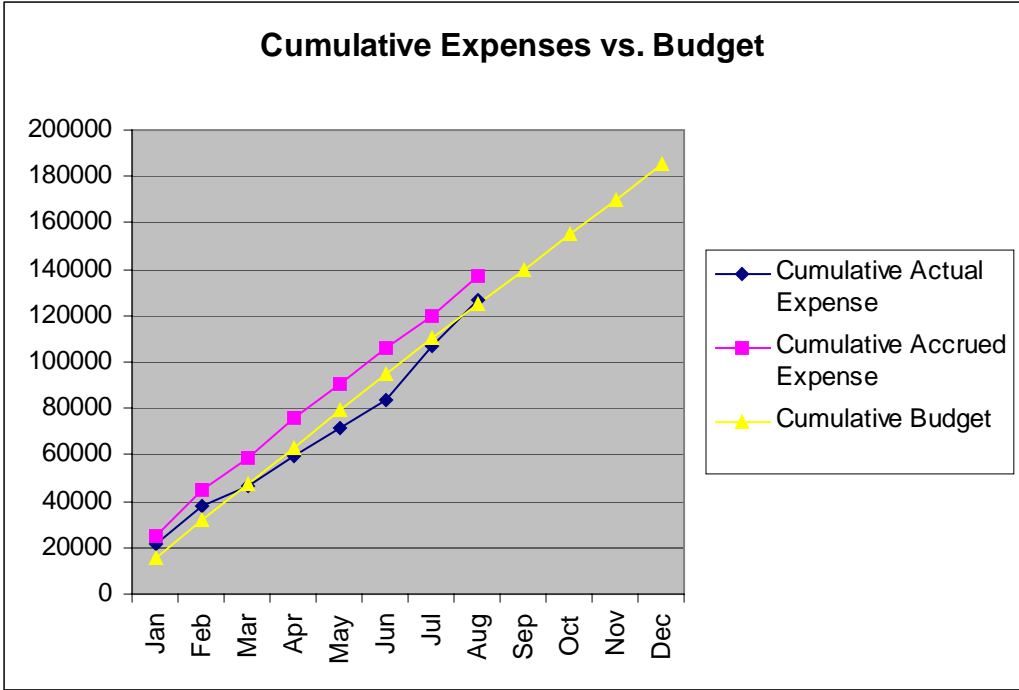
Activity	Number
Page Views	6,587
Visits	351
Unique Visitors	133
Data Transferred (Mb)	4,963



VI. Finances

During August, 104 technical hours and \$20,342 were expended of which \$7,806 was hosting.



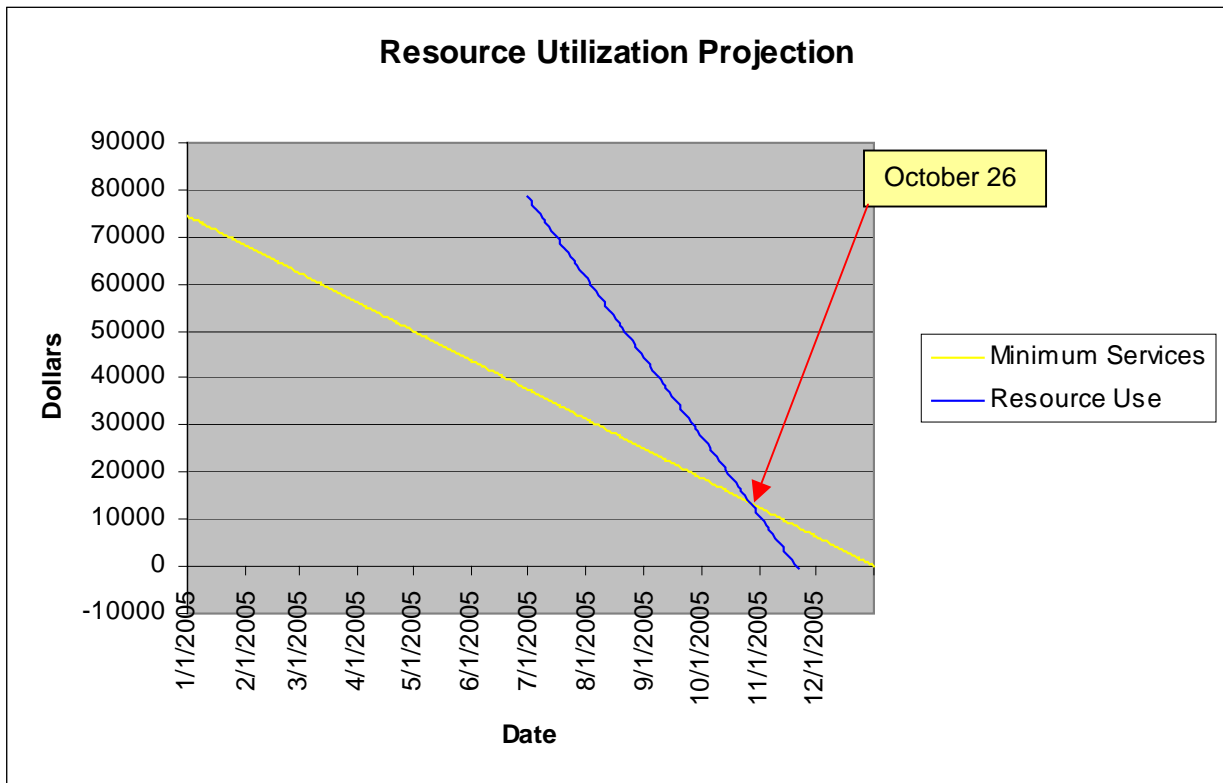


VII. Analysis

Actual expenses were above budget for the period and were up from July owing to multiple data loads. Hosting expenses from prior periods posted in August; hosting expenses not yet posted constitute the difference between Actual and Accrued expenses.

The profile of the work conducted to date continues to be at odds with the estimate that was prepared prior to rollout, which was approximately 25% of a full time equivalent (FTE) of Database Analyst (DBA) time and 50% FTE of Data Analyst (DA) time. The nature of the work to date has required the DBA at approximately 75% FTE and a small percentage of activity being conducted by the DA. Notable events in this period included the preparation of NIF data for a user, as well as significant data loading of Environ and Air Sciences modeled inventories to EDMS inventory 8.

The current resource utilization rate will force cutback to minimal services on October 22, 2005. The resource utilization rate may change significantly in coming months; the projected date of cutback is by cited for planning and visualization purposes only.



VIII. Plans For The Next Reporting Period

- Continue Tribal data analysis and remediation;
- Continue implementing data corrections and updates, including release of Actual Inventory 1.2 (2002 Actual - amended);
- Release Inventory 1.2
- Prepare for Acceptance Testing; and
- Prepare monthly reports.