

WESTERN REGIONAL AIR PARTNERSHIP

EMISSIONS DATA MANAGEMENT SYSTEM

**DBA Report
June 2005**

DRAFT

PECHAN

5528-B Hempstead Way
Springfield, VA 22151

703-813-6700 telephone
703-813-6729 facsimile

3622 Lyckan Parkway
Suite 2002
Durham, NC 27707

919-493-3144 telephone
919-493-3182 facsimile

P.O. Box 1345
El Dorado, CA 95623

530-295-2995 telephone
530-295-2999 facsimile

Prepared for:
Western Regional Air Partnership
Emissions Data Management System
Steering Committee

-and-

Western Governor's Association
1515 Cleveland Place
Suite 200
Denver, Colorado 80202

Prepared by:

E.H. Pechan & Associates, Inc.
3622 Lyckan Parkway, Suite 2002
Durham, NC 27707

July 17, 2005

Contract No. #30204-78
Pechan Report No. 9490.002.005

[This page intentionally left blank.]

Table of Contents

I. Introduction	1
II. Hours by Activity Type.....	1
A. Overview.....	1
B. Detail	2
III. Hours by Staff Type.....	3
IV. User Information.....	3
A. New Registrations.....	3
B. Privilege Promotions.....	4
C. User Census.....	4
V. Web Traffic.....	4
VI. Finances	5
VII. Analysis.....	7
VIII. Plans For The Next Reporting Period.....	8

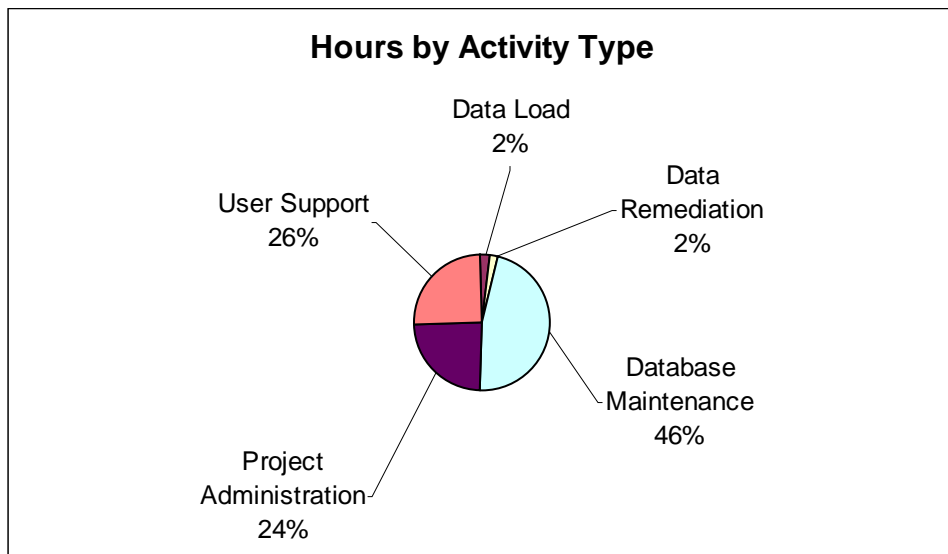
I. Introduction

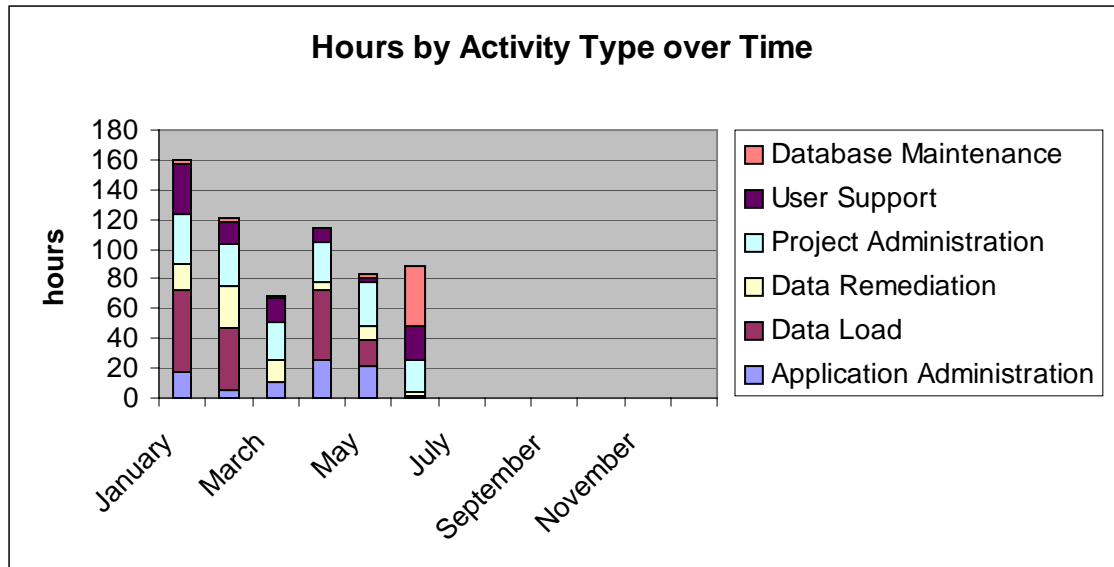
This report details the activities associated with the operation and maintenance of the Emissions Data Management System (EDMS) for the report period.

II. Hours by Activity Type

A. Overview

Activity	Time	Percentage
Application Administration	0	0%
Data Load	2	2%
Data Remediation	2	2%
Database Maintenance	40.5	46%
Project Administration	21.5	24%
User Support	23	26%
Total	89	





B. Detail

Entries in this section are taken directly from activity logs and have been minimally edited.

Data Load

- Continued work with RA/RD-based submissions; and
- Worked with Environ data submission.

Data Remediation

- Continued analysis of Nevada data corrections.

Database Maintenance

- Worked with CEP on storage, fiscal, and maintenance considerations;
- Initiated deletion of work-in-progress data processing records for published inventories.

Project Administration

- Maintained project website with previously unposted presentations and meeting documents;
- Prepared new graphs for DBA Report;
- Prepared Monthly Progress Report;

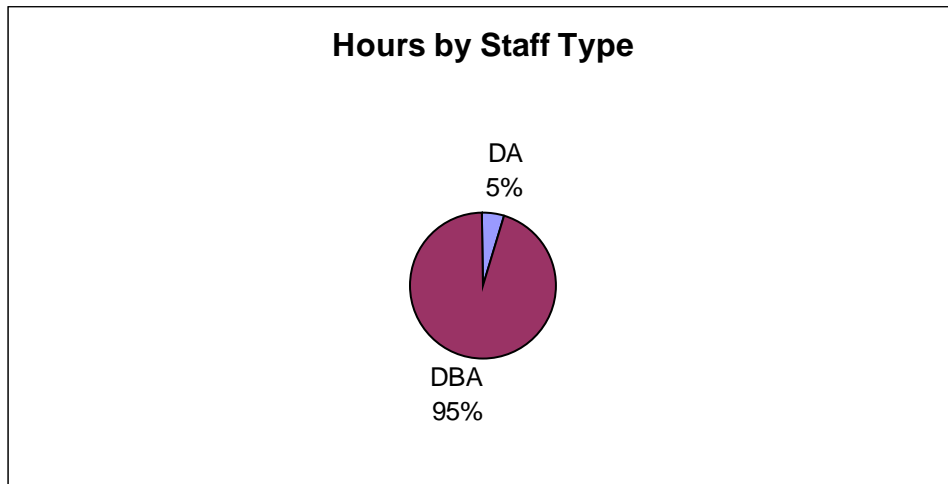
- Completed DBA report;
- Prepared for and completed Steering Committee status call; and
- Prepared and posted minutes of Steering Committee.

User Support

- Assisted users with data requests;
- Assisted users with interface;
- User promotions; and
- User registration of new users.

III. Hours by Staff Type

DA/DBA	Hours	Percentage
DA	4.5	5%
DBA	84.5	95%
Total	89	



IV. User Information

A. New Registrations

NAME
Shandon Smith
Ketan Patel
Gregory Stella
Kevin Golden

NAME
Stefan Falke
Ayush Srivastava
Mark Janssen
Sandra Goodman
Marjorie Klitch
Priscilla Ligh
James Carlin

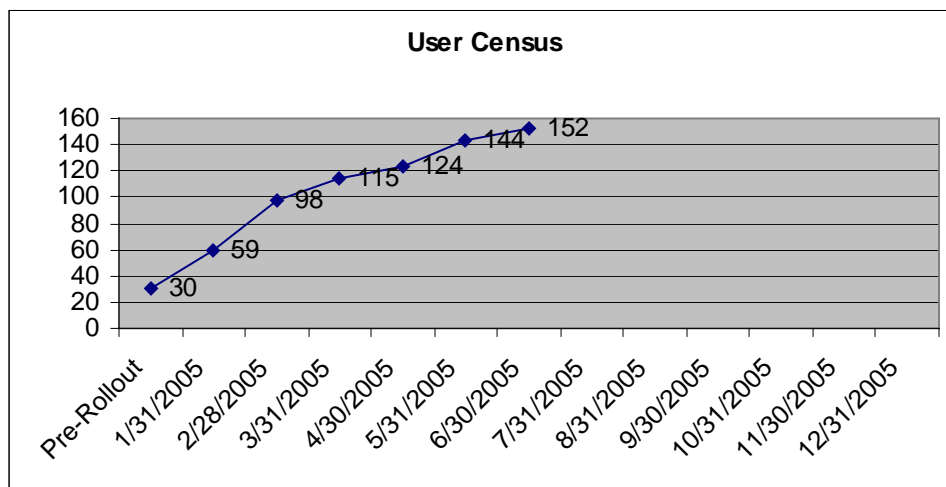
B. Privilege Promotions

NAME	LEVEL
Greg Stella	DA
Mark Janssen	DA
Sandra Goodman	DA
Marjorie Klitch	DA

C. User Census

The following data is taken from the EDMS database and may differ from counts taken by other means.

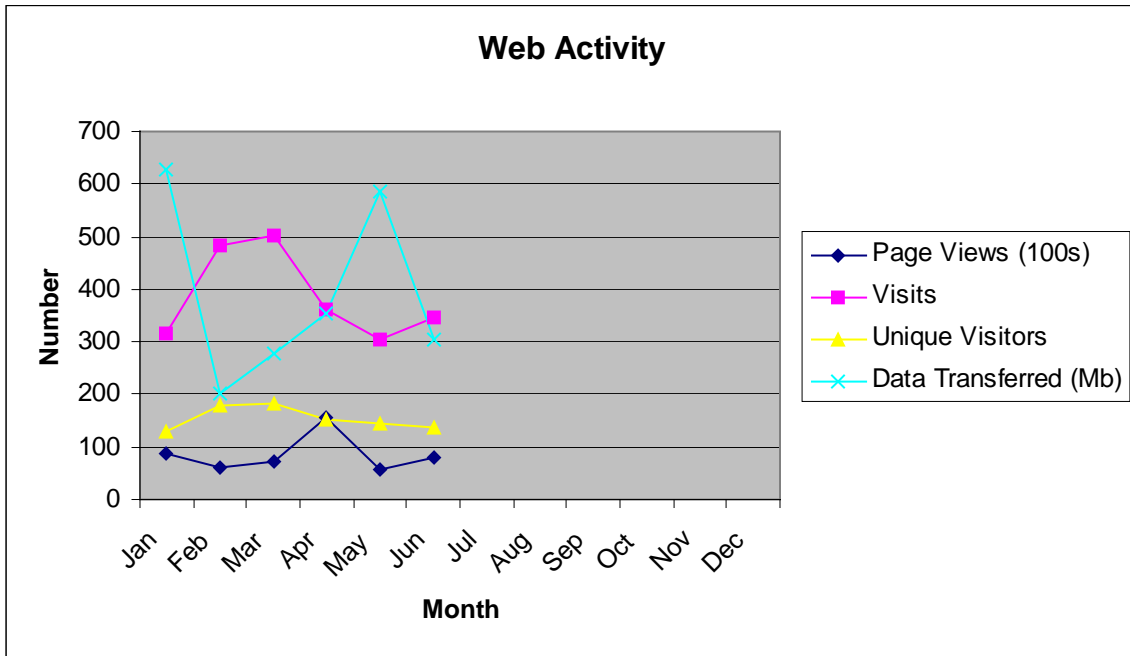
General Users: 115
 Data Analysts: 17
 Data Owners: 20
Total 3/28/2005: 152



V. Web Traffic

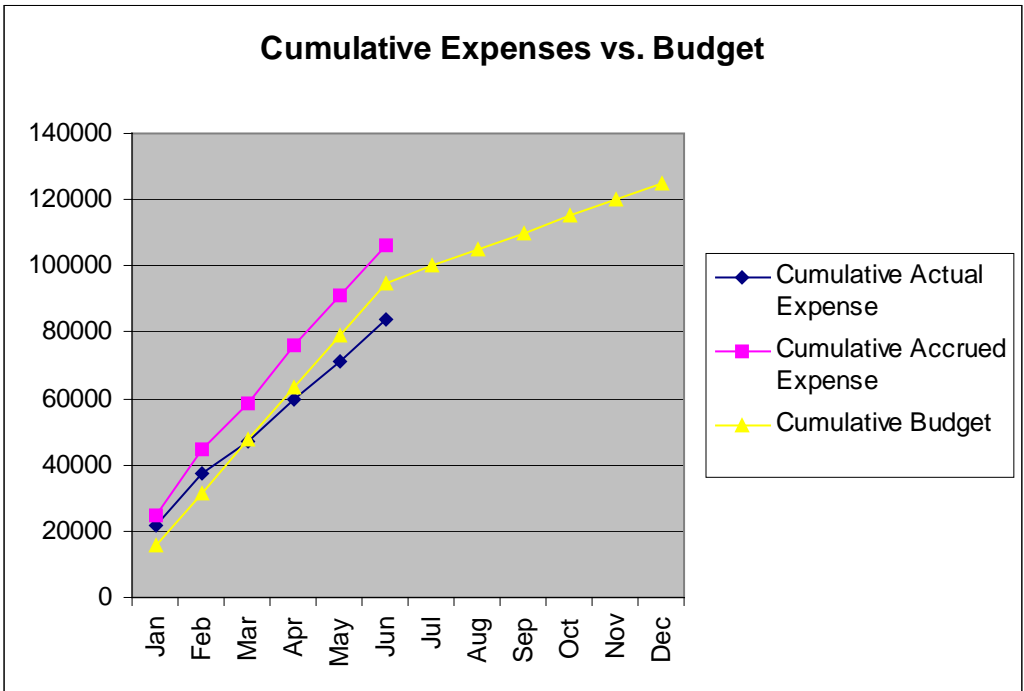
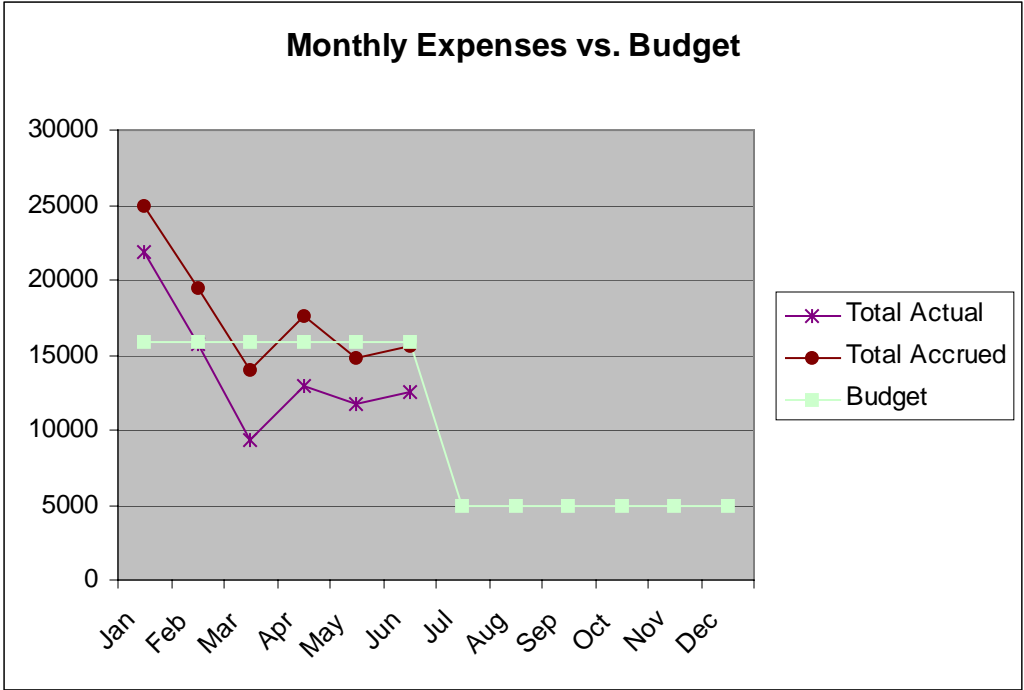
Web activity for the reporting period is characterized in the charts that follow.

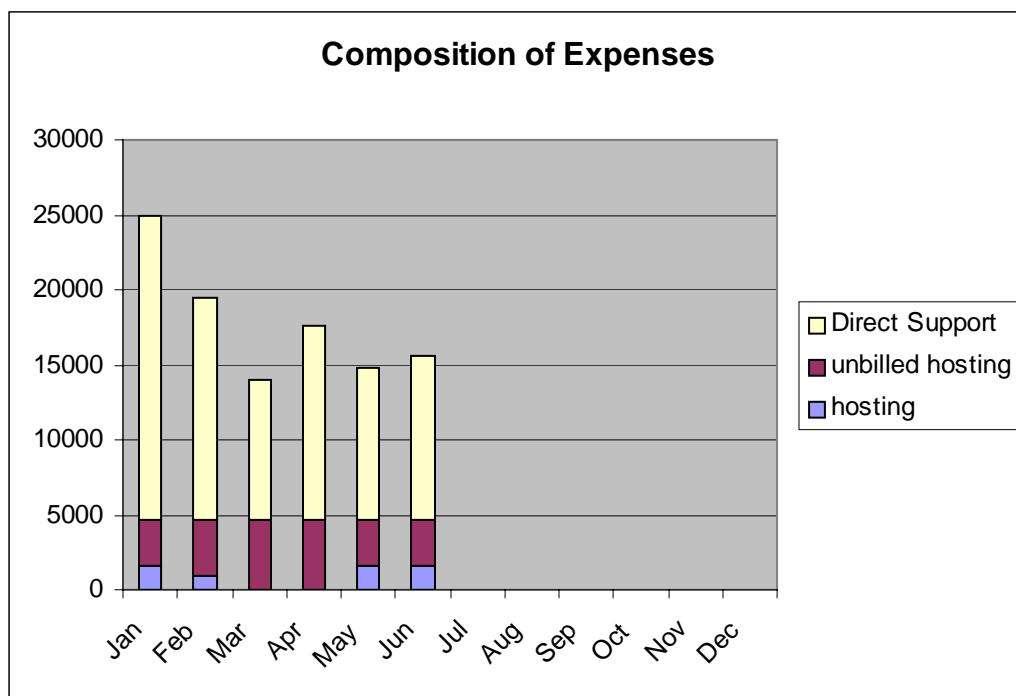
Activity	Number
Page Views	8126
Visits	348
Unique Visitors	136
Data Transferred (Mb)	305



VI. Finances

During April, 89 technical hours and \$12,520 were expended of which \$1,594 was hosting.



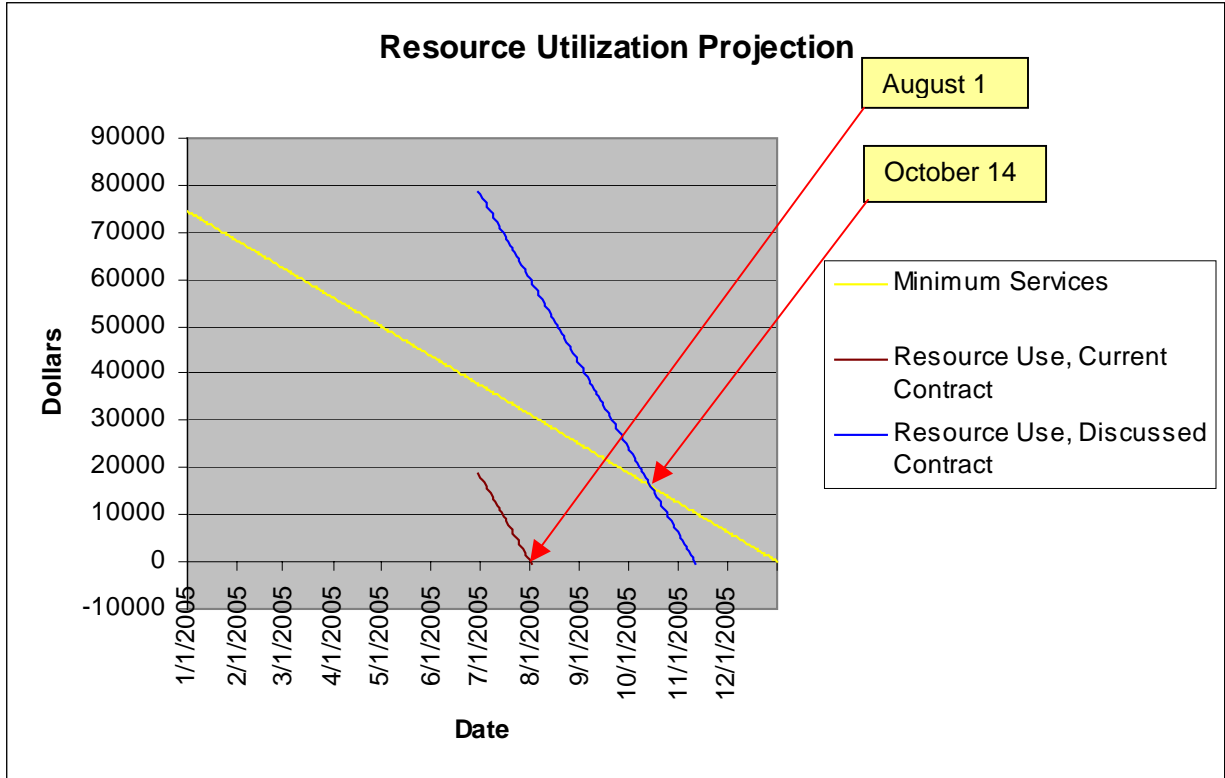


VII. Analysis

Actual expenses were under budget for the period; were up 8% from last period; and were 89% of an average month (\$14,000) for the year so far. Additional hosting expenses for the period were incurred but have not yet posted; these expenses constitute the difference between Actual and Accrued expenses.

The profile of the work conducted to date continues to be at odds with the estimate that was prepared prior to rollout, which was approximately 25% of a full time equivalent (FTE) of Database Analyst (DBA) time and 50% FTE of Data Analyst (DA) time. The nature of the work to date has required the DBA at approximately 75% FTE and a small percentage of activity being conducted by the DA. Notable events in this period included the deletion of by-product records used to produce the published inventories, and support of users with specific interests.

The current resource utilization rate will force cutback to minimal services on October 14, 2005 assuming the modification to the contract to fund support services for the July-December period as discussed. Without the discussed contract modification, all support resources will be consumed by August 1. The resource utilization rate may change significantly in coming months; the projected date of cutback is by cited for planning and visualization purposes only.



Pechan negotiated improved terms for Hosting and Maintenance. The data and application hosting provided by CEP is expected to be agreed upon at \$3,099 per month, with application support provided by i2k2 at \$1,594 per month, totaling \$4,694 per month rather than the estimated \$5,000.

VIII. Plans For The Next Reporting Period

- Continue Tribal data analysis and remediation;
- Continue implementing data corrections and updates, including release of Actual Inventory 1.1 (2002 Actual - amended);
- Re-load the fire inventory prepared by Air Sciences;
- Load the Environ inventory;
- Prepare for Acceptance Testing; and
- Prepare monthly reports.