

# **WESTERN REGIONAL AIR PARTNERSHIP**

## **EMISSIONS DATA MANAGEMENT SYSTEM**

**DBA Report  
May 2005**

**DRAFT**

### **PECHAN**

5528-B Hempstead Way  
Springfield, VA 22151

703-813-6700 telephone  
703-813-6729 facsimile

3622 Lyckan Parkway  
Suite 2002  
Durham, NC 27707

919-493-3144 telephone  
919-493-3182 facsimile

P.O. Box 1345  
El Dorado, CA 95623

530-295-2995 telephone  
530-295-2999 facsimile

Prepared for:  
Western Regional Air Partnership  
Emissions Data Management System  
Steering Committee

-and-

Western Governor's Association  
1515 Cleveland Place  
Suite 200  
Denver, Colorado 80202

Prepared by:

E.H. Pechan & Associates, Inc.  
3622 Lyckan Parkway, Suite 2002  
Durham, NC 27707

June 16, 2005

Contract No. #30204-78  
Pechan Report No. 9490.002.005

*[This page intentionally left blank.]*

## Table of Contents

I. Introduction .....	1
II. Hours by Activity Type.....	1
A. Overview.....	1
B. Detail .....	2
III. Hours by Staff Type.....	3
IV. User Information.....	4
A. New Registrations.....	4
B. Privilege Promotions.....	4
C. User Census.....	4
V. Web Traffic.....	5
VI. Finances .....	6
VII. Analysis.....	7
VIII. Plans For The Next Reporting Period.....	8

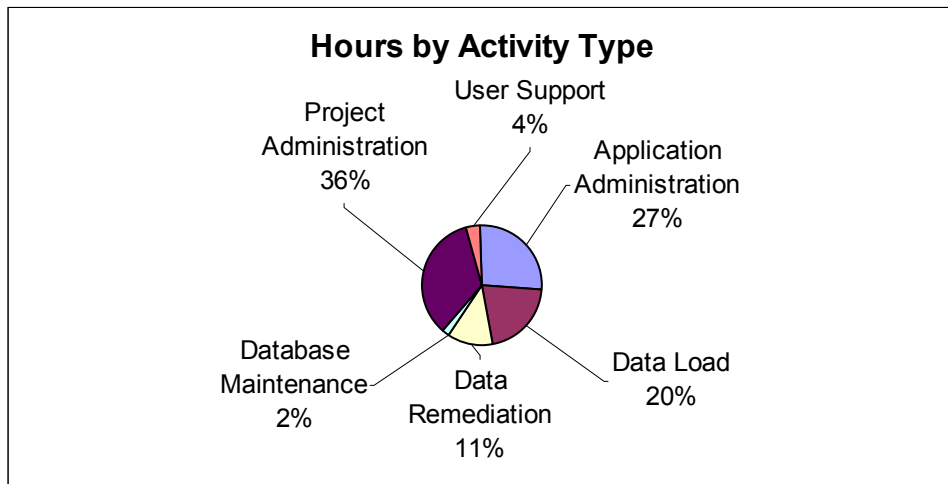
## I. Introduction

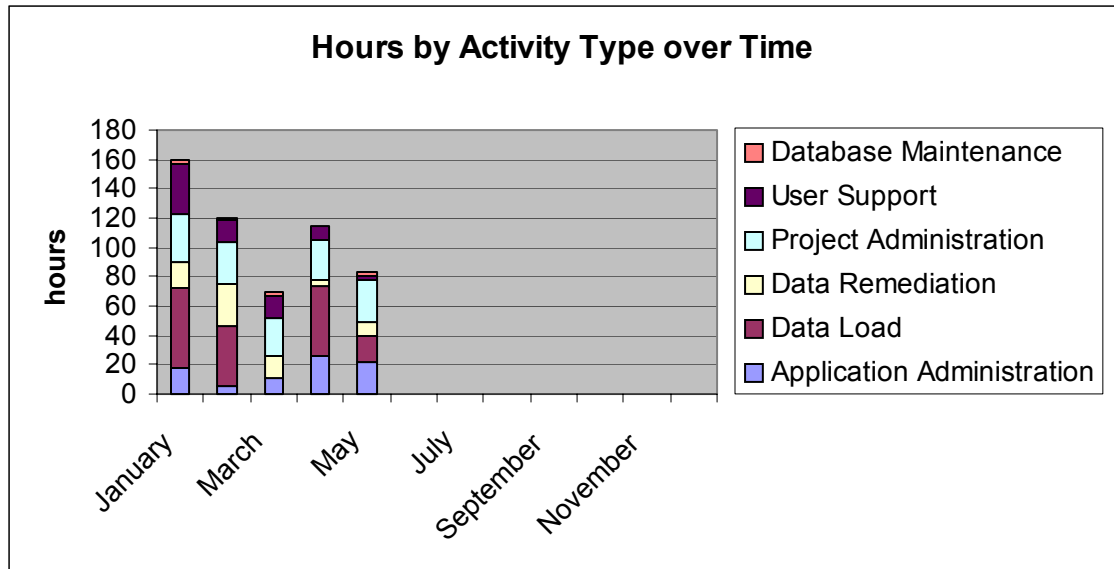
This report details the activities associated with the operation and maintenance of the Emissions Data Management System (EDMS) for the report period.

## II. Hours by Activity Type

### A. Overview

Activity	Time	Percentage
Application Administration	22	27%
Data Load	17	20%
Data Remediation	9.5	11%
Database Maintenance	2	2%
Project Administration	29.5	36%
User Support	3	4%
<b>Total</b>	<b>83</b>	





## B. Detail

Entries in this section are taken directly from activity logs and have been minimally edited.

### Application Administration

- Prepared Source Category Documentation that shows which data providers reported which source categories, linking to reporting maps.

### Data Load

- Interacted with other WRAP modeling contractors
- Met with UNC CEP to consider data storage options in light of size of fire inventory;
- Completed Fire data load; and
- Interact with WRAP modeling contractors.

### Data Remediation

- Analyzed Utah revisions;
- Analyzed Nevada data corrections;
- Worked on RA/RD capabilities of import pursuant to Maricopa County;
- Talked with Bob Downing regarding updates;
- Talked with Roy Doyle regarding CO modifications; and

- Worked with Tribal Data Remediation.

**Database Maintenance**

- Worked with CEP on storage and maintenance considerations.

**Project Administration**

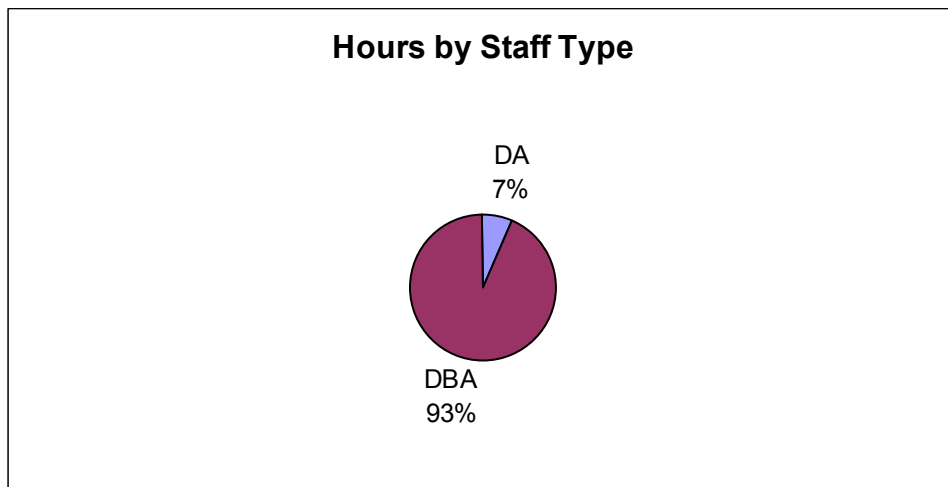
- Prepared new graphs for DBA Report;
- Prepared Monthly Progress Report;
- Completed DBA report;
- Prepared for and completed Steering Committee status call; and
- Prepared and posted minutes of Steering Committee.

**User Support**

- Reloaded FTP data for Greg Stella;
- Assisted User with GIS questions;
- Assisted User with data request;
- User promotions; and
- User registration of new users.

**III. Hours by Staff Type**

DADBA	Hours	Percentage
DA	5.5	7%
DBA	77.5	93%
<b>Total</b>	<b>83</b>	



## IV. User Information

### A. New Registrations

Eleven users were added during the reporting period. All users are added at the general user classification. Users may be elevated to higher access levels upon their request and approval by the WRAP.

NAME
Janet
Jeff Merrell
Michael Lazarus
Joseph
Tom Peters
Peter Schwarzhoff
Colin diCenzo
Marjorie
Ken Cronin
Mohammad Omary
Tony
John KillEagle
Steven Branoff
David Sellers
Christopher Kamper

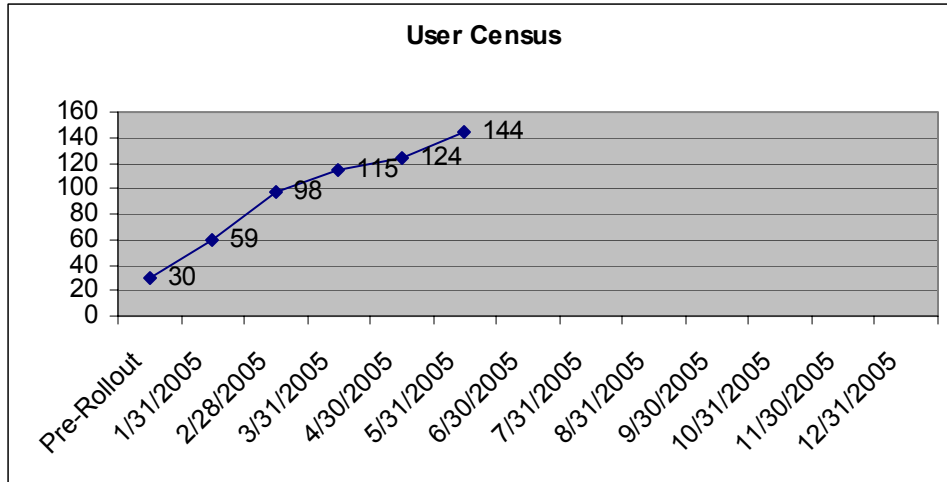
### B. Privilege Promotions

NAME	LEVEL
Mohammad Omary	DA

### C. User Census

The following data is taken from the EDMS database and may differ from counts taken by other means.

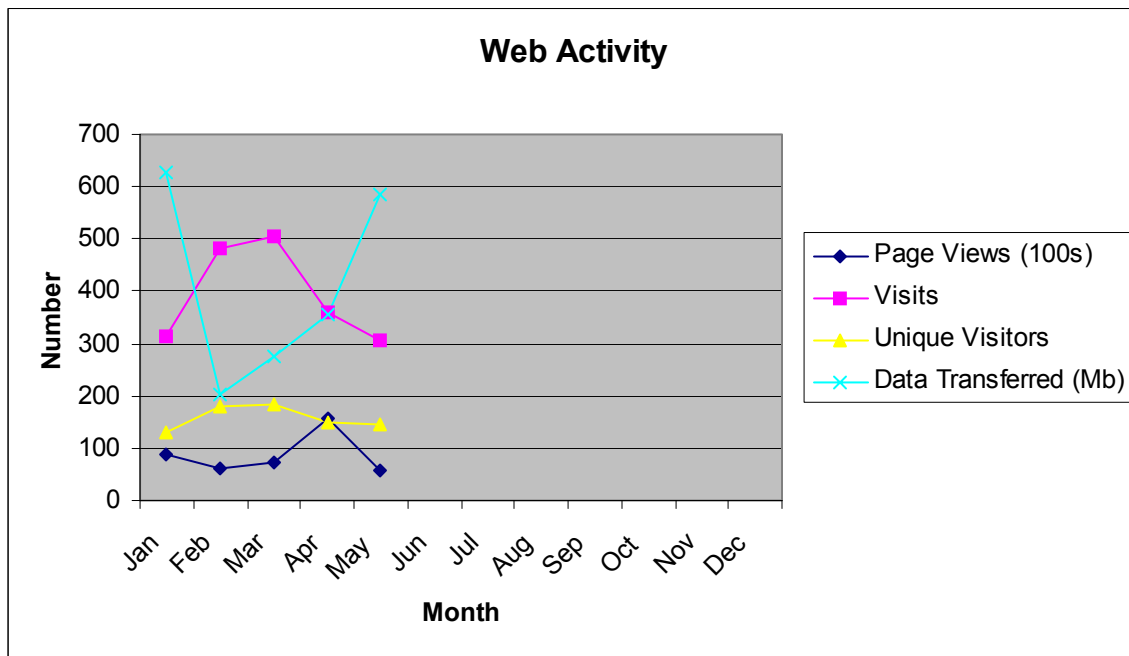
General Users:	113
Data Analysts:	13
Data Owners:	18
<b>Total 3/28/2005:</b>	<b>144</b>



## V. Web Traffic

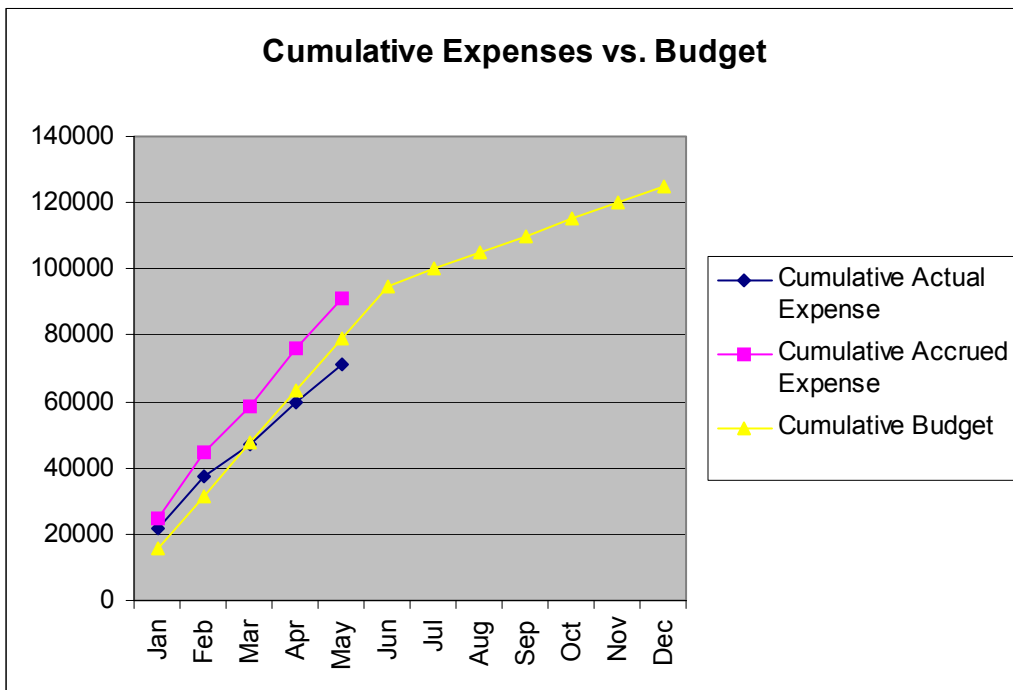
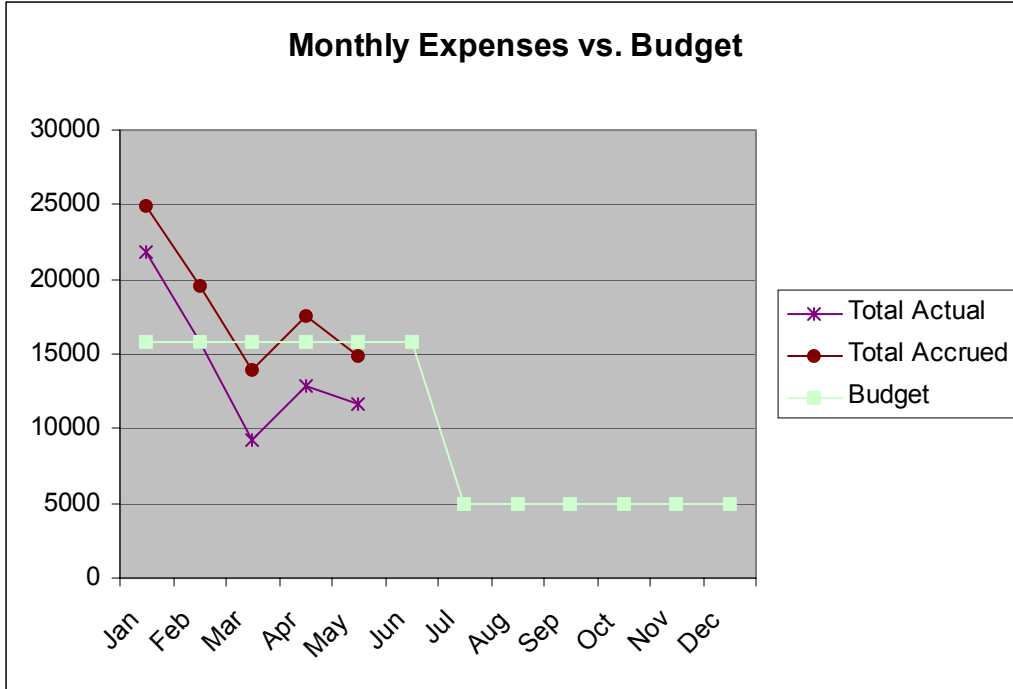
Web activity for the reporting period is characterized in the charts that follow.

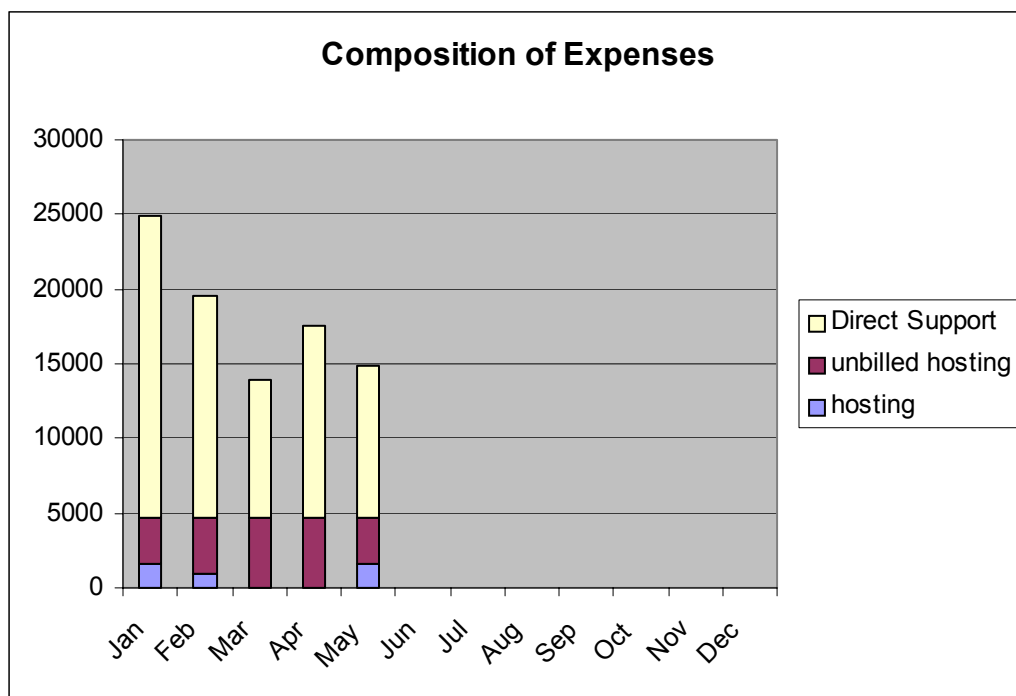
Activity	Number
Page Views	5598
Visits	306
Unique Visitors	146
Data Transferred (Mb)	584



## VI. Finances

During April, 83 technical hours and \$12,843 were expended of which \$2,724 was hosting.



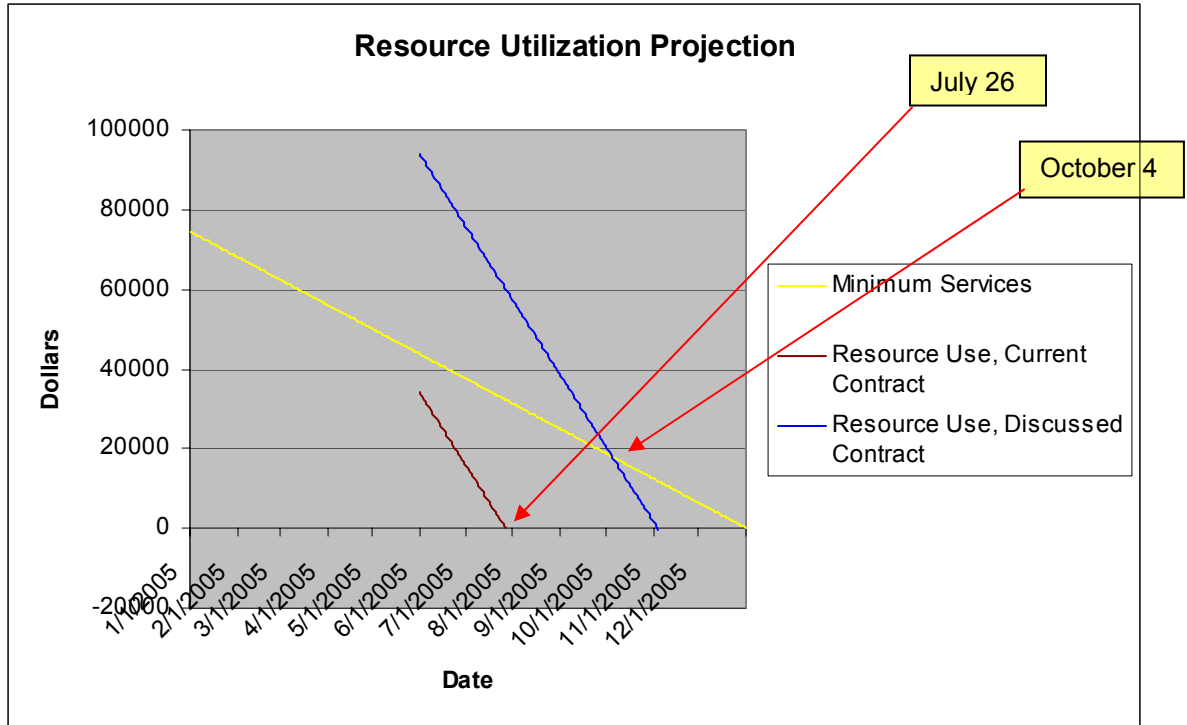


## VII. Analysis

Actual expenses were under budget for the period; were down 22% from last period; and were 82% of an average month (\$14,296) for the year so far. Additional hosting expenses for the period were incurred but have not yet posted; these expenses constitute the difference between Actual and Accrued expenses. Some prior period hosting expenses posted.

The profile of the work conducted to date continues to be at odds with the estimate that was prepared prior to rollout, which was approximately 25% of a full time equivalent (FTE) of Database Analyst (DBA) time and 50% FTE of Data Analyst (DA) time. The nature of the work to date has required the DBA at approximately 75% FTE and a small percentage of activity being conducted by the DA. Notable events in this period included the initial load of the Environ inventory.

The current resource utilization rate will force cutback to minimal services on November 3, 2005 assuming the modification to the contract to fund support services for the July-December period as discussed. Without the discussed contract modification, all support resources will be consumed by July 26. The resource utilization rate may change significantly in coming months; the projected date of cutback is by cited for planning and visualization purposes only.



Pechan negotiated improved terms for Hosting and Maintenance. The data and application hosting provided by CEP is expected to be agreed upon at \$3,099 per month, with application support provided by i2k2 at \$1,594 per month, totaling \$4,694 per month rather than the estimated \$5,000.

### VIII. Plans For The Next Reporting Period

- Continue Tribal data analysis and remediation;
- Continue implementing data corrections and updates;
- Re-load the fire inventory prepared by Air Sciences;
- Load the Environ inventory;
- Prepare for Acceptance Testing; and
- Prepare monthly reports.