

# **WESTERN REGIONAL AIR PARTNERSHIP**

## **EMISSIONS DATA MANAGEMENT SYSTEM**

**DBA Report  
April 2005**

**DRAFT**

### **PECHAN**

5528-B Hempstead Way  
Springfield, VA 22151

703-813-6700 telephone  
703-813-6729 facsimile

3622 Lyckan Parkway  
Suite 2002  
Durham, NC 27707

919-493-3144 telephone  
919-493-3182 facsimile

P.O. Box 1345  
El Dorado, CA 95623

530-295-2995 telephone  
530-295-2999 facsimile

Prepared for:  
Western Regional Air Partnership  
Emissions Data Management System  
Steering Committee

-and-

Western Governor's Association  
1515 Cleveland Place  
Suite 200  
Denver, Colorado 80202

Prepared by:

E.H. Pechan & Associates, Inc.  
3622 Lyckan Parkway, Suite 2002  
Durham, NC 27707

June 1, 2005

Contract No. #30204-78  
Pechan Report No. 9490.002.004

*[This page intentionally left blank.]*

## Table of Contents

I. Introduction .....	1
II. Hours by Activity Type.....	1
A. Overview.....	1
B. Detail .....	2
III. Hours by Staff Type.....	3
IV. User Information.....	4
A. New Registrations .....	4
B. Privilege Promotions .....	4
C. User Census.....	5
V. Web Traffic .....	5
VI. Finances .....	6
VII. Analysis .....	7
VIII. Plans For The Next Reporting Period.....	8

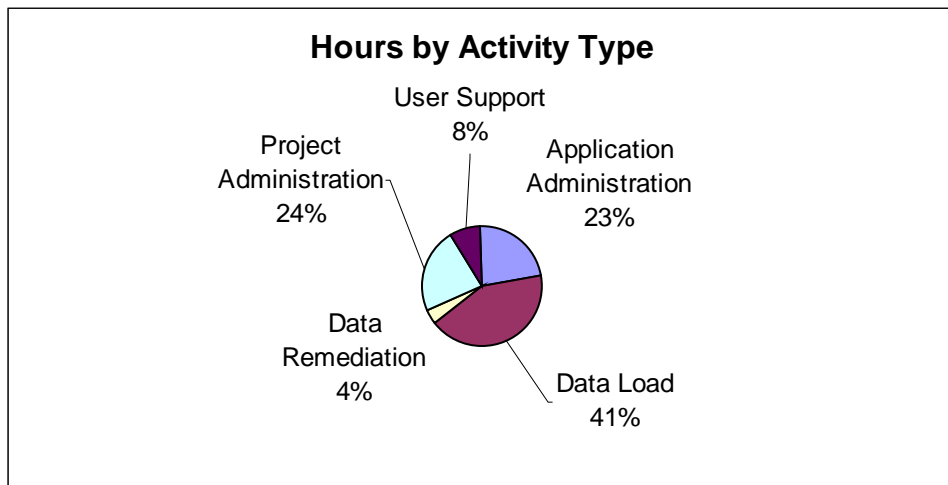
## I. Introduction

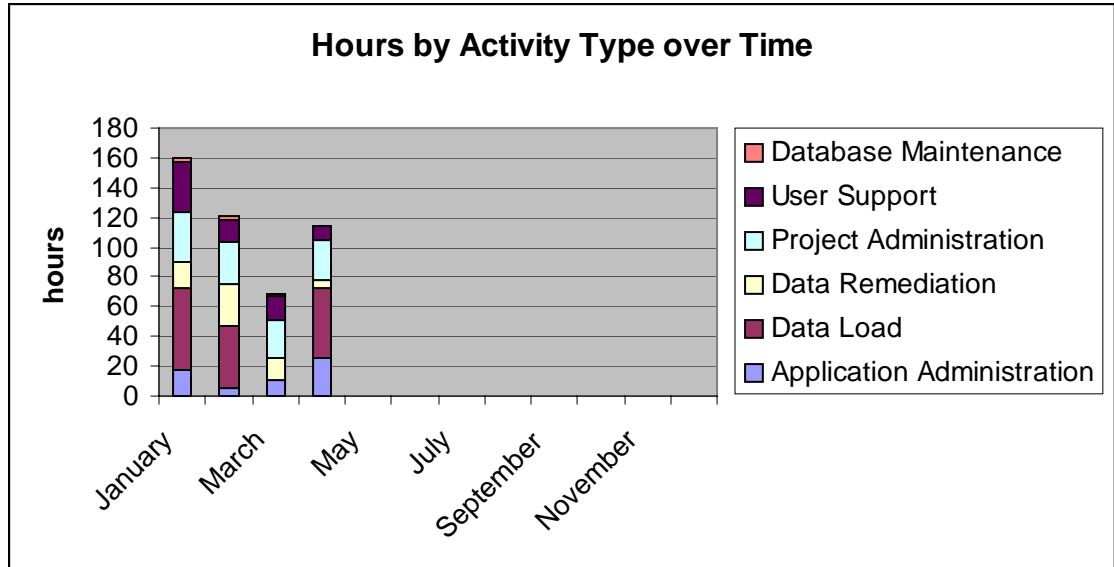
This report details the activities associated with the operation and maintenance of the Emissions Data Management System (EDMS) for the report period.

## II. Hours by Activity Type

### A. Overview

Activity	Time	Percentage
Application Administration	26	23%
Data Load	47	41%
Data Remediation	4.5	4%
Project Administration	27.5	24%
User Support	9.5	8%
<b>Total</b>	<b>114.5</b>	





## B. Detail

Entries in this section are taken directly from activity logs and have been minimally edited.

### Application Administration

- Prepared documentation of data reporters (maps, user assistance documents);
- Checked ad-hoc report Access export capabilities for point, area, non-road;
- Checked GIS facility functionality;
- Prepared assistance material for users pursuant to potentially overlapping jurisdictions;
- Updated document descriptions with their dates and titles;
- Conversed with Tom on user suggestions from the Attribution of Haze group; and
- Prepared Source Category Documentation that shows which data providers reported which source categories, linking to reporting maps.

### Data Load

- Loaded Fire data, including halt and unload of user interface approach;
- Analyzed FIRE import requirements; and
- Developed text files to assist with the SQLoader to load the state fire text files into Oracle;

- Finished converting the text files from Air Sciences into Databases and uploaded most of the files onto the website;
- Loaded Fire data, including conferences with UNC, DA, i2k2.

### **Data Remediation**

- Corrected NV data; and
- Prepared tribal corrections.

### **Database Maintenance**

- Modified lookup table values for jurisdictional changes.

### **Project Administration**

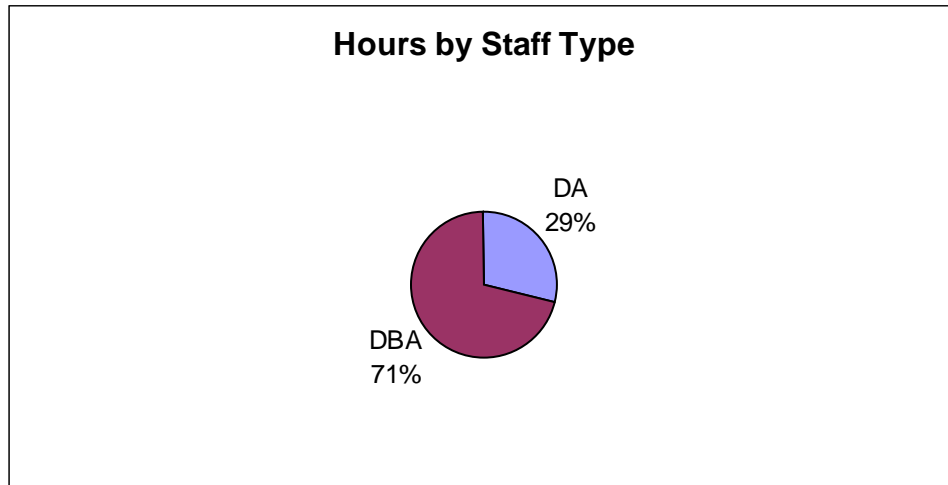
- Prepared DBA report;
- Loaded two new users, fixed incorrect e-mail;
- Interacted with Tom, Steve;
- Prepared web activity reports for current and past periods;
- Performed staffing projections through June 30;
- Prepared monthly progress report; and
- Prepared for and executed call with steering committee.

### **User Support**

- Assisted users with Internet Explorer/SVG difficulty;
- Upgraded Environ users;
- Assisted user with NIF data;
- Posted NIF files for user; emailed EDMS presentation to user; posted EDMS presentation to project web site;
- User promotions; and
- User registration of new users.

### **III. Hours by Staff Type**

DADBA	SumOfTime	Percentage
DA	33	29%
DBA	81.5	71%
<b>Total</b>	114.5	



#### IV. User Information

##### A. New Registrations

Eleven users were added during the reporting period. All users are added at the general user classification. Users may be elevated to higher access levels upon their request and approval by the WRAP.

NAME
Alper Unal
Curtis Taipale
Marjorie
Nilesh
Cassie Archuleta
Douglas Fox
Jeffrey G. Stocum
Vasant Rajagopalan
Lyn Harwell
Jim Miller
Brock LeBaron

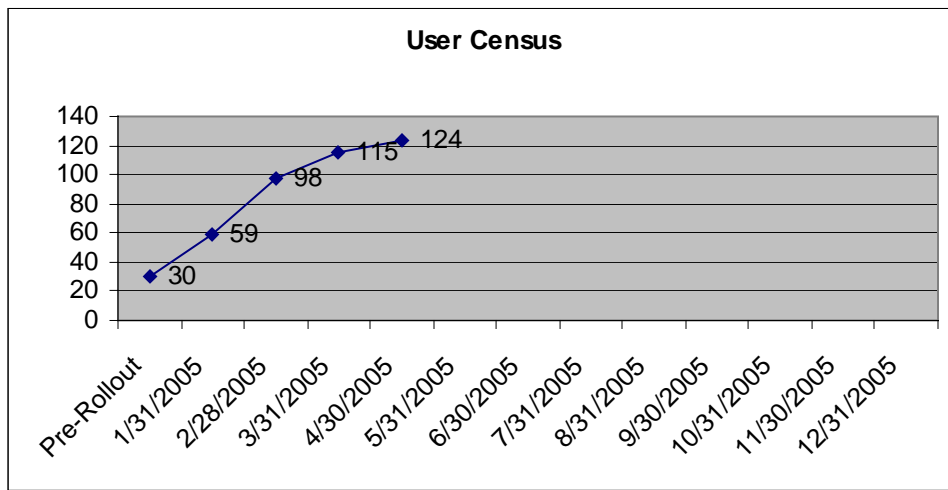
##### B. Privilege Promotions

NAME	LEVEL
Sandyha Rao	DO

### C. User Census

The following data is taken from the EDMS database and may differ from counts taken by other means.

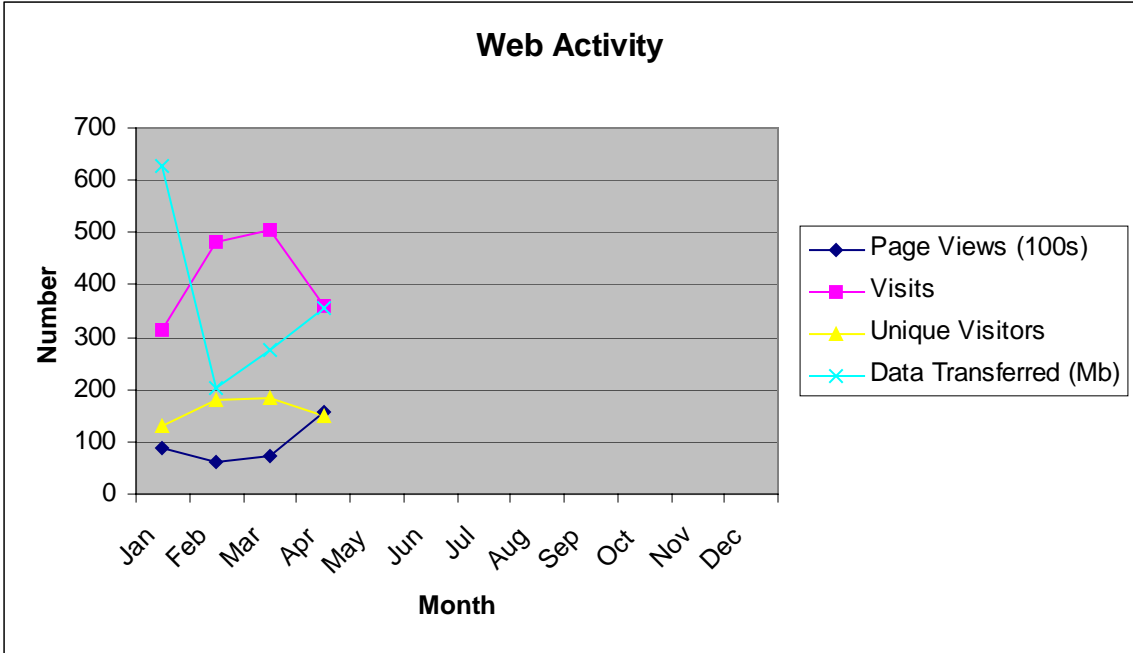
General Users:	93
Data Analysts:	12
Data Owners:	19
<b>Total 3/28/2005:</b>	<b>124</b>



### V. Web Traffic

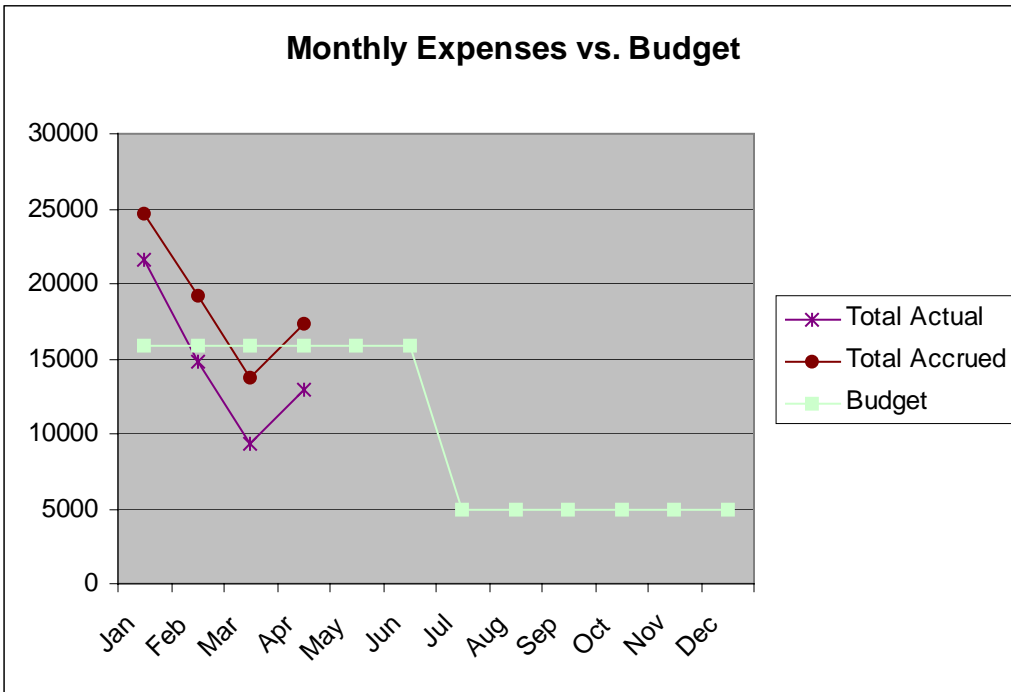
Web activity for the reporting period is characterized in the charts that follow.

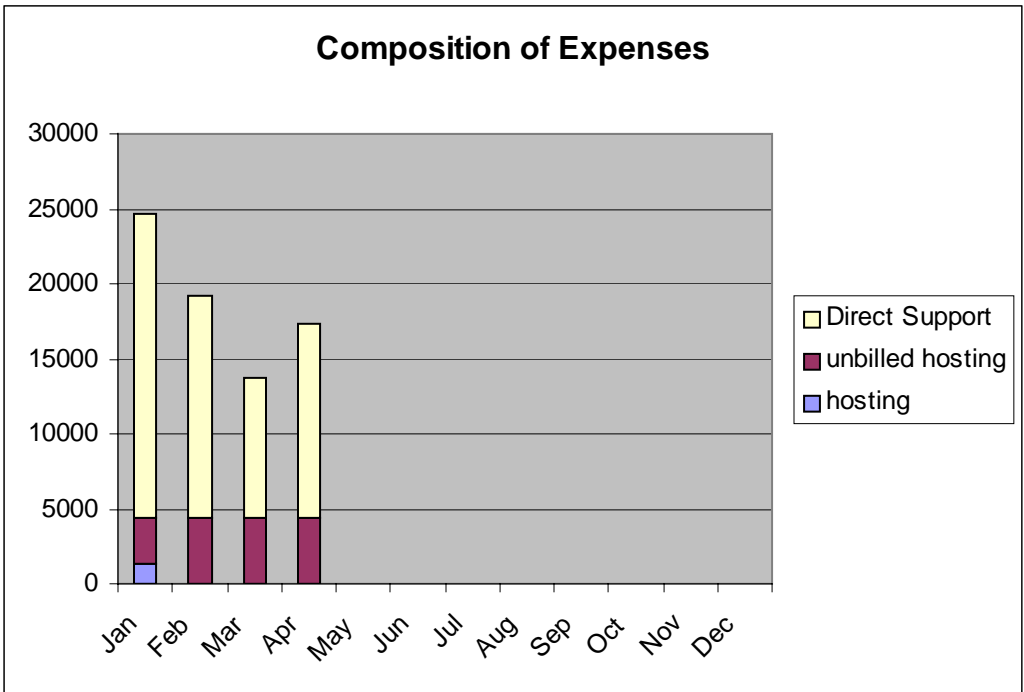
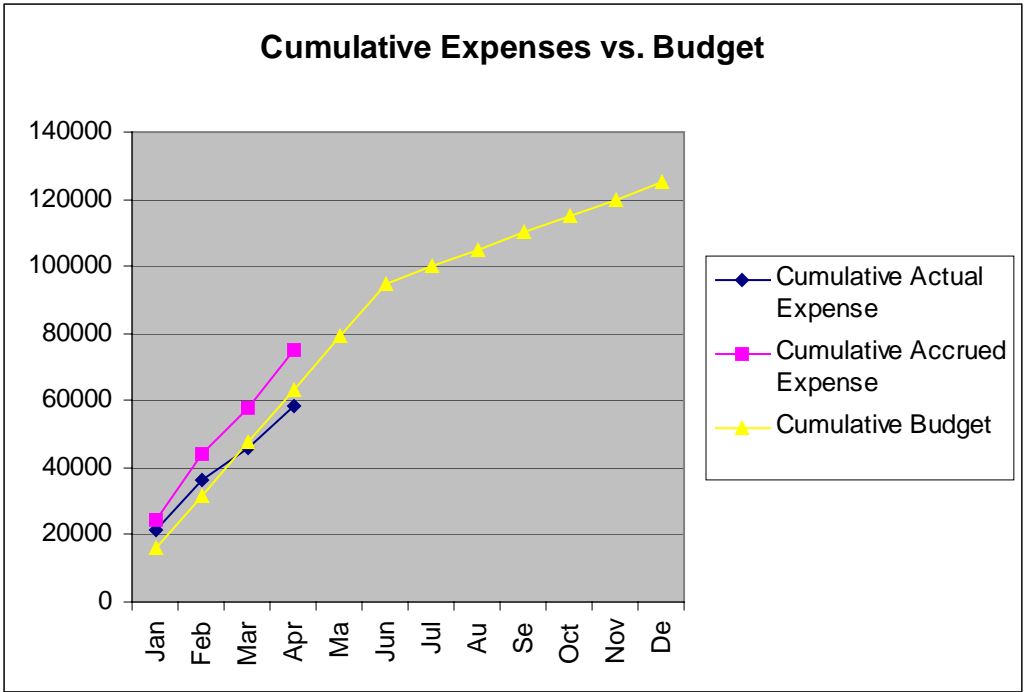
Activity	Number
Page Views	15660
Visits	361
Unique Visitors	151
Data Transferred (Mb)	355



## VI. Finances

During April, 114.5 technical hours and \$12,903.48 were expended. There were no hosting charges posted in the period.



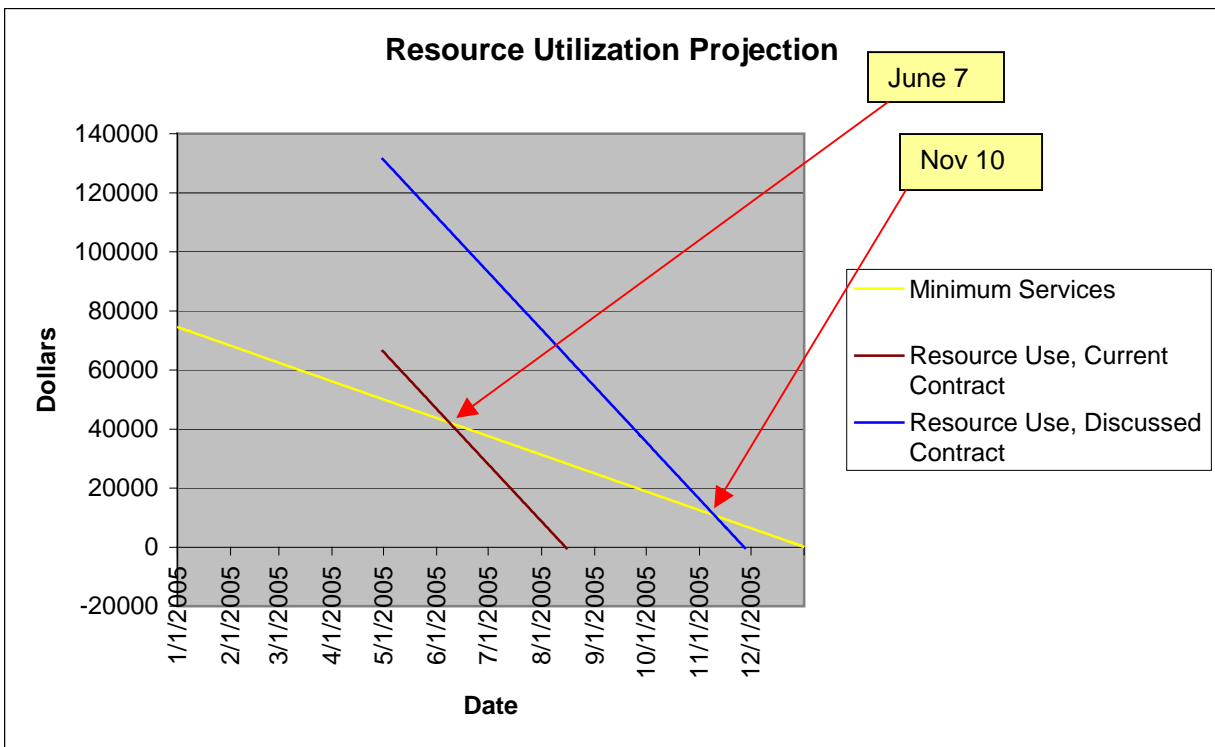


**VII. Analysis**

Actual expenses were under budget for the period; were up 39% from last period; and were 88% of an average month (\$14,638) for the year so far. Additional hosting expenses for the period were incurred but have not yet posted; these expenses constitute the difference between Actual and Accrued expenses. The profile of the work conducted

to date continues to be at odds with the estimate that was prepared prior to rollout, which was approximately 25% of a full time equivalent (FTE) of Database Analyst (DBA) time and 50% FTE of Data Analyst (DA) time. The nature of the work to date has required the DBA at approximately 75% FTE and a small percentage of activity being conducted by the DA. Notable events in this period included the initial load of the fire inventory.

The current resource utilization rate will force cutback to minimal services on June 7, 2005. Assuming the modification to the contract to fund support services for the July-December period as discussed, the cutback date is projected to be November 10. The resource utilization rate may change significantly in coming months; the projected date of cutback is by cited for planning and visualization purposes only.



Pechan continues to negotiate improved terms for Hosting and Maintenance. The data and application hosting provided by CEP is expected to be agreed upon at \$2,917 per month, with application support provided by i2k2 at \$1,500 per month, totaling \$4,417 per month rather than the estimated \$5,000.

### VIII. Plans For The Next Reporting Period

- Continue Tribal data analysis and remediation;
- Continue implementing data corrections and updates;
- Re-load the fire inventory prepared by Air Sciences;
- Prepare for Acceptance Testing; and

- Prepare monthly reports.